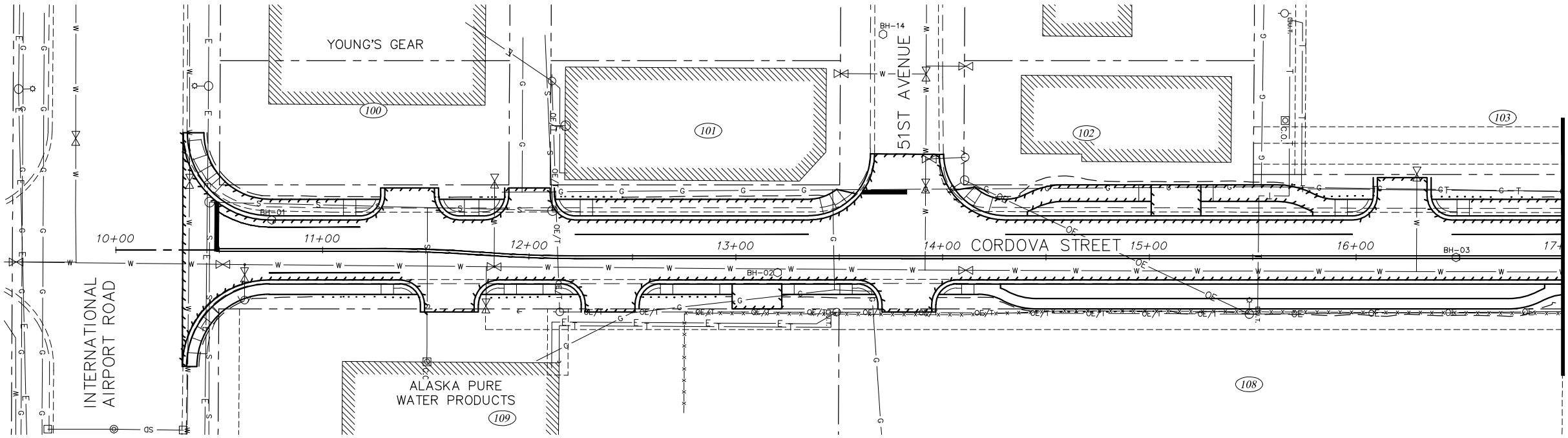
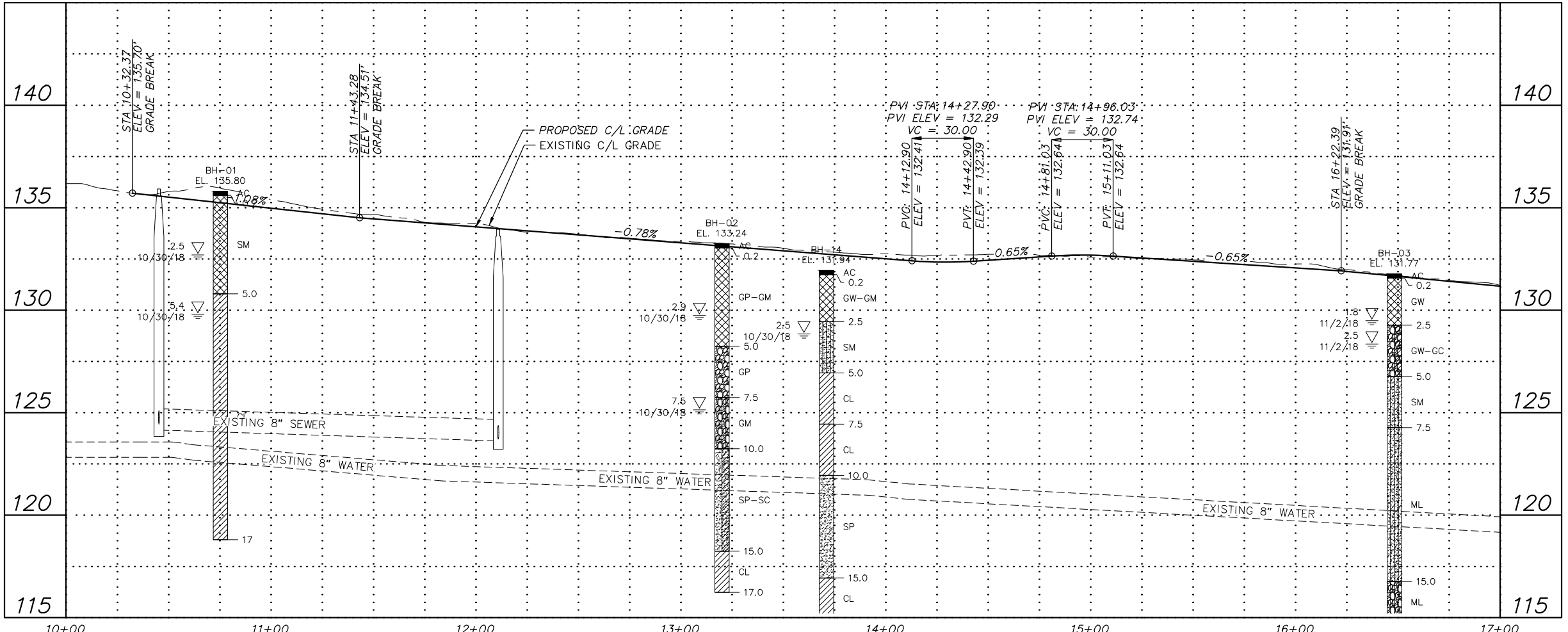


Roadway Plan & Profile Drawings

Appendix B



NOTES:
 1. SEE ALTERNATIVE 2 PLAN AND PROFILE DRAWINGS FOR CORDOVA STREET PROPOSED STORM DRAIN FACILITIES.



ALTERNATIVE #1

File: s:\jobdata\10143.00_48th Ave And Cordova St Reconstruction\00_CADD\01_Civil\10143.00_Plan And Profile - Roadway_Alt 1.dwg

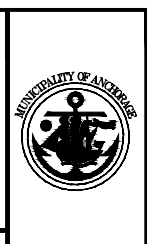
RECORD DRAWING
 1. DATA PROVIDED BY: _____ TITLE: _____
 THIS WILL SERVE TO CERTIFY THAT THESE RECORD DRAWINGS ARE A TRUE AND ACCURATE REPRESENTATION OF THE PROJECT AS CONSTRUCTED.
 CONTRACTOR: _____
 BY: _____ TITLE: _____ DATE: _____
 2. DATA TRANSFERRED BY: _____ TITLE: _____
 COMPANY: _____ DATE: _____
 3. BASED ON PERIODIC FIELD OBSERVATIONS BY THE ENGINEER (OR AN INDIVIDUAL UNDER HIS/HER DIRECT SUPERVISION), THE CONTRACTOR-PROVIDED DATA APPEARS TO REPRESENT THE PROJECT AS CONSTRUCTED.
 DATA TRANSFER CHECKED BY: _____ TITLE: _____
 COMPANY: _____ DATE: _____
 BY: _____

DATA	DRAWN BY	CHECKED BY
BASE		
TOPOGRAPHY		
PROFILE		
STORM SEWER		
WATER/SANITARY SEWER		
GAS		
TELEPHONE		
ELECTRIC		
DESIGN		
QUANTITIES		
PRELIMINARY/FINAL		
MUNICIPAL/STATE		

FIELD BOOKS	BM NO.	LOCATION	ELEV.	REV	DATE	DESCRIPTION	BY

GRAPHIC SCALE: 60 30 0 30 60

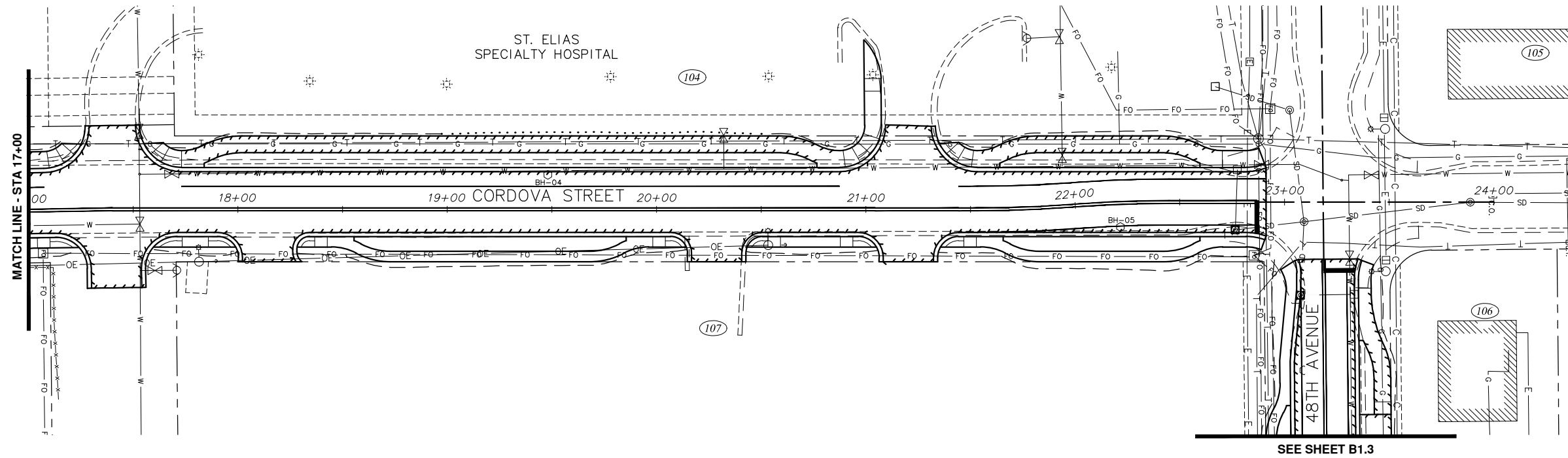
3940 ARCTIC BLVD, SUITE 300
 ANCHORAGE, ALASKA 99503
 PHONE: (907) 562-3252
 #AEL882-AR



PROJECT MANAGEMENT AND ENGINEERING DEPARTMENT
 06-26 48TH AVENUE & CORDOVA STREET RECONSTRUCTION SCHED A
ROADWAY PLAN AND PROFILE
 CORDOVA STREET
 BOP TO STA 17+00

SCALE: HOR. 1"=30'
 VER. 1"=3'

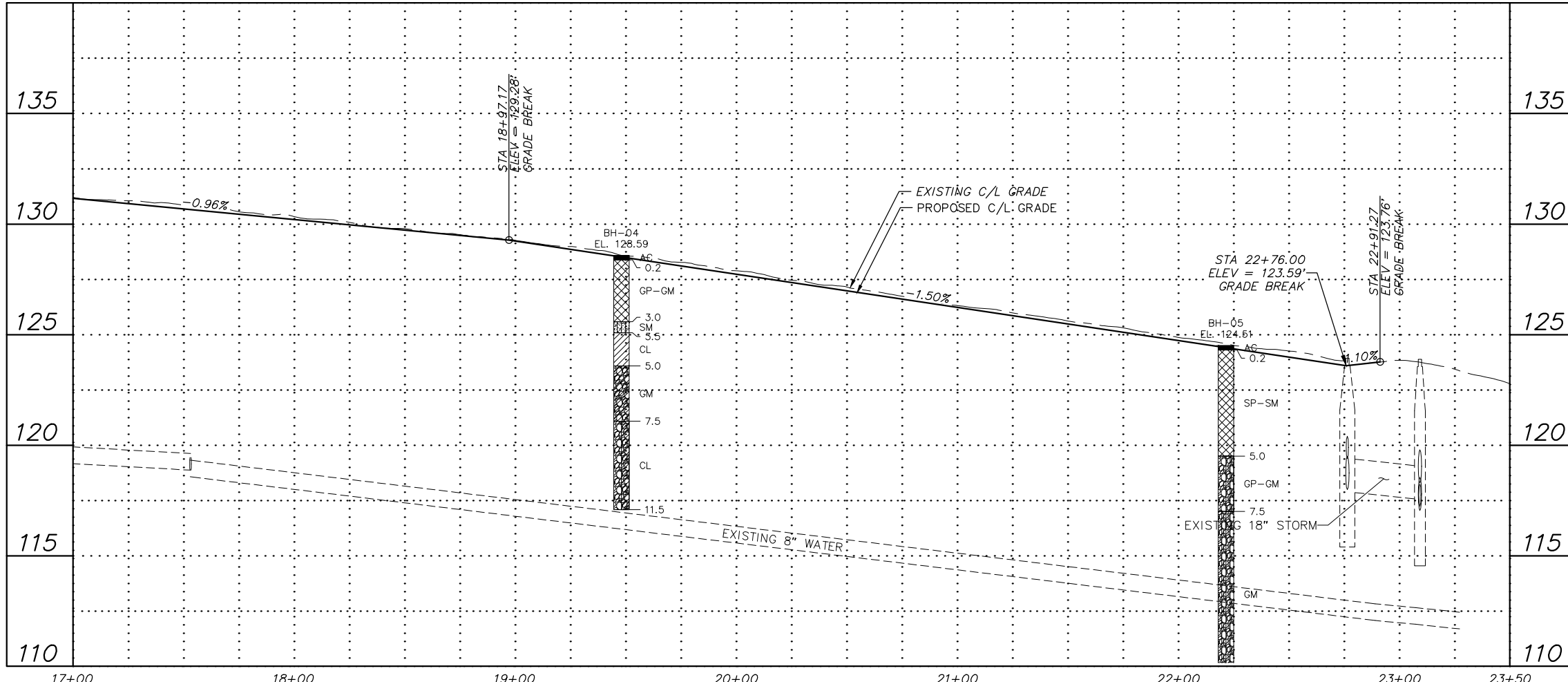
GRID SW1831
 DATE DEC 2019 STATUS DSR SHEET B1.1 of B1.5



NOTES:
 1. SEE ALTERNATIVE 2 PLAN AND PROFILE DRAWINGS FOR CORDOVA STREET PROPOSED STORM DRAIN FACILITIES.

SEE SHEET B1.3

ALTERNATIVE #1



File: s:\jobdata\10143.00_48th Ave And Cordova St Reconstruction\00_CADD\01_Civil\0143.00_Plan And Profile - Roadway_Alt_1.dwg

RECORD DRAWING
 1. DATA PROVIDED BY: _____ TITLE: _____
 THIS WILL SERVE TO CERTIFY THAT THESE RECORD DRAWINGS ARE A TRUE AND ACCURATE REPRESENTATION OF THE PROJECT AS CONSTRUCTED.
 CONTRACTOR: _____ DATE: _____
 BY: _____
 2. DATA TRANSFERRED BY: _____ TITLE: _____
 COMPANY: _____ DATE: _____
 3. BASED ON PERIODIC FIELD OBSERVATIONS BY THE ENGINEER (OR AN INDIVIDUAL UNDER HIS/HER DIRECT SUPERVISION), THE CONTRACTOR-PROVIDED DATA APPEARS TO REPRESENT THE PROJECT AS CONSTRUCTED.
 DATA TRANSFER CHECKED BY: _____ TITLE: _____
 COMPANY: _____ DATE: _____
 BY: _____

DATA	DRAWN BY	CHECKED BY
BASE		
TOPOGRAPHY		
PROFILE		
STORM SEWER		
WATER/SANITARY SEWER		
GAS		
TELEPHONE		
ELECTRIC		
DESIGN		
QUANTITIES		
PRELIMINARY/FINAL		
MUNICIPAL/STATE		

FIELD BOOKS	BM NO.	LOCATION	ELEV.	REV	DATE	DESCRIPTION	BY

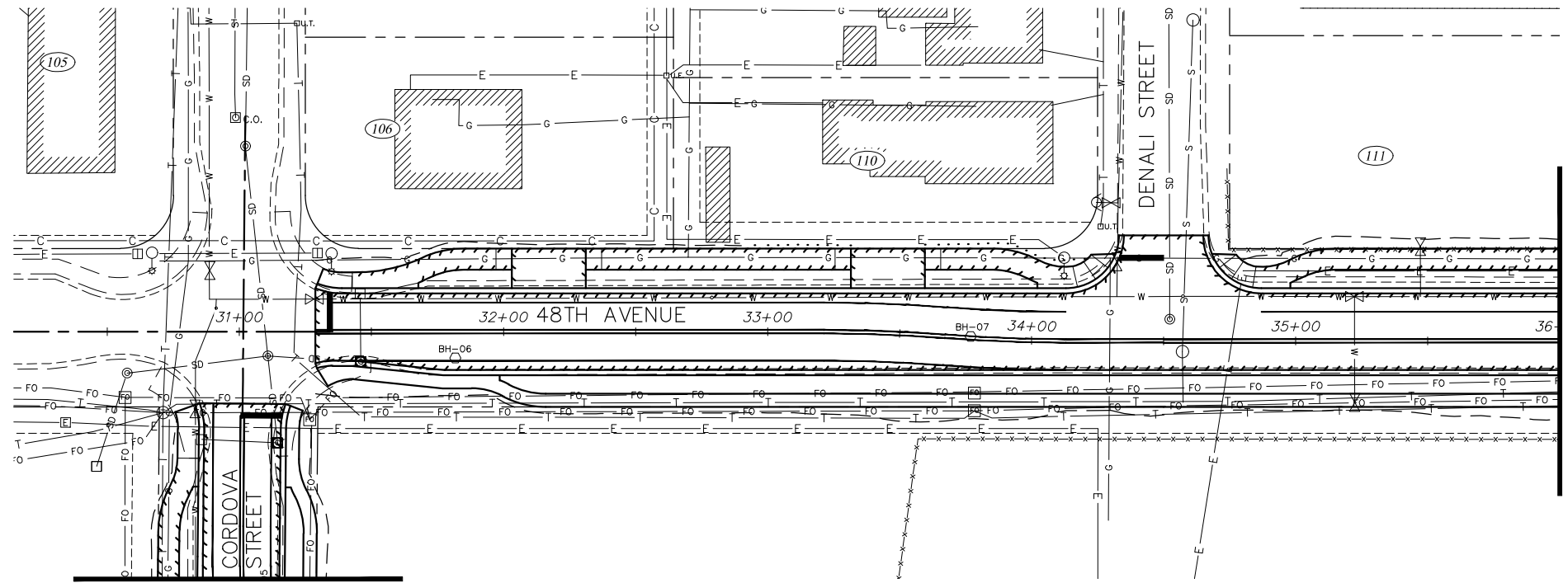
CRW ENGINEERING GROUP, LLC
 3940 ARCTIC BLVD, SUITE 300
 ANCHORAGE, ALASKA 99503
 PHONE: (907) 562-3252
 #AECLE882-AR



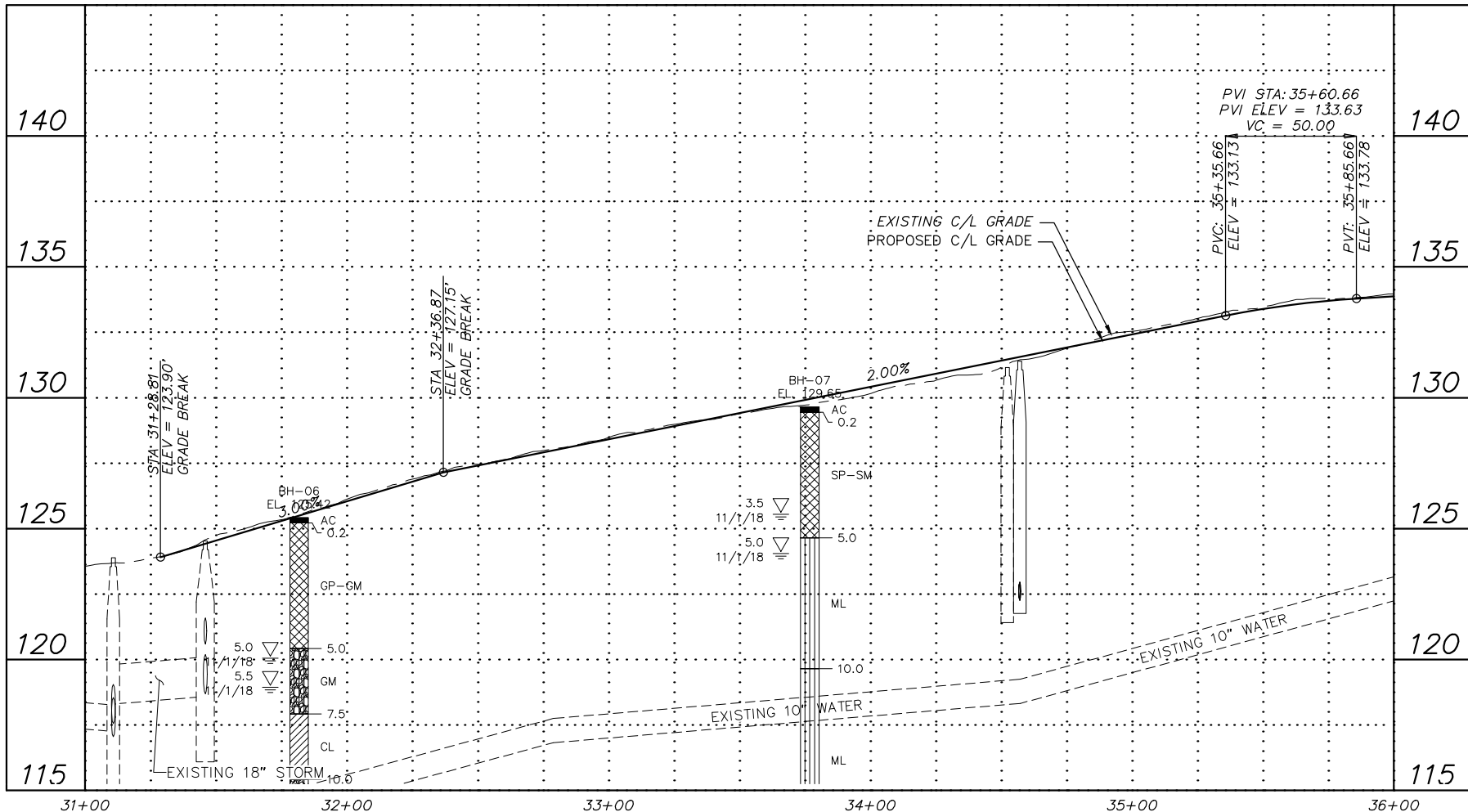
PROJECT MANAGEMENT AND ENGINEERING DEPARTMENT
 06-26 48TH AVENUE & CORDOVA STREET RECONSTRUCTION SCHED A
ROADWAY PLAN AND PROFILE
 CORDOVA STREET STA 17+00 TO EOP
 SCALE HOR. 1"=30' VER. 1"=3'
 GRID SW1831 DATE DEC 2019 STATUS DSR SHEET B1.2 of B1.5

NOTES:

- SEE ALTERNATIVE 3 PLAN AND PROFILE DRAWINGS FOR 48TH AVENUE PROPOSED STORM DRAIN FACILITIES.



ALTERNATIVE #1



File: s:\jobdata\10143.00_48th Ave And Cordova St Reconstruction\00_CADD\01_Civil\0143.00_Plan And Profile - Roadway_Alt 1.dwg

RECORD DRAWING

1. DATA PROVIDED BY: _____ TITLE: _____
 THIS WILL SERVE TO CERTIFY THAT THESE RECORD DRAWINGS ARE A TRUE AND ACCURATE REPRESENTATION OF THE PROJECT AS CONSTRUCTED.
 CONTRACTOR: _____ DATE: _____

2. DATA TRANSFERRED BY: _____ TITLE: _____
 COMPANY: _____ DATE: _____

3. BASED ON PERIODIC FIELD OBSERVATIONS BY THE ENGINEER (OR AN INDIVIDUAL UNDER HIS/HER DIRECT SUPERVISION), THE CONTRACTOR-PROVIDED DATA APPEARS TO REPRESENT THE PROJECT AS CONSTRUCTED.
 DATA TRANSFER CHECKED BY: _____ TITLE: _____
 COMPANY: _____ DATE: _____
 BY: _____

DATA	DRAWN BY	CHECKED BY
BASE		
TOPOGRAPHY		
PROFILE		
STORM SEWER		
WATER/SANITARY SEWER		
GAS		
TELEPHONE		
ELECTRIC		
DESIGN		
QUANTITIES		
PRELIMINARY/FINAL		
MUNICIPAL/STATE		

FIELD BOOKS	BM NO.	LOCATION	ELEV.	REV	DATE	DESCRIPTION	BY

CRW ENGINEERING GROUP, LLC

3940 ARCTIC BLVD, SUITE 300
 ANCHORAGE, ALASKA 99503
 PHONE: (907) 562-3252
 #AEL0882-AR

REVISIONS	CONSULTANT	SEAL



PROJECT MANAGEMENT AND ENGINEERING DEPARTMENT

06-26 48TH AVENUE & CORDOVA STREET RECONSTRUCTION SCHED A

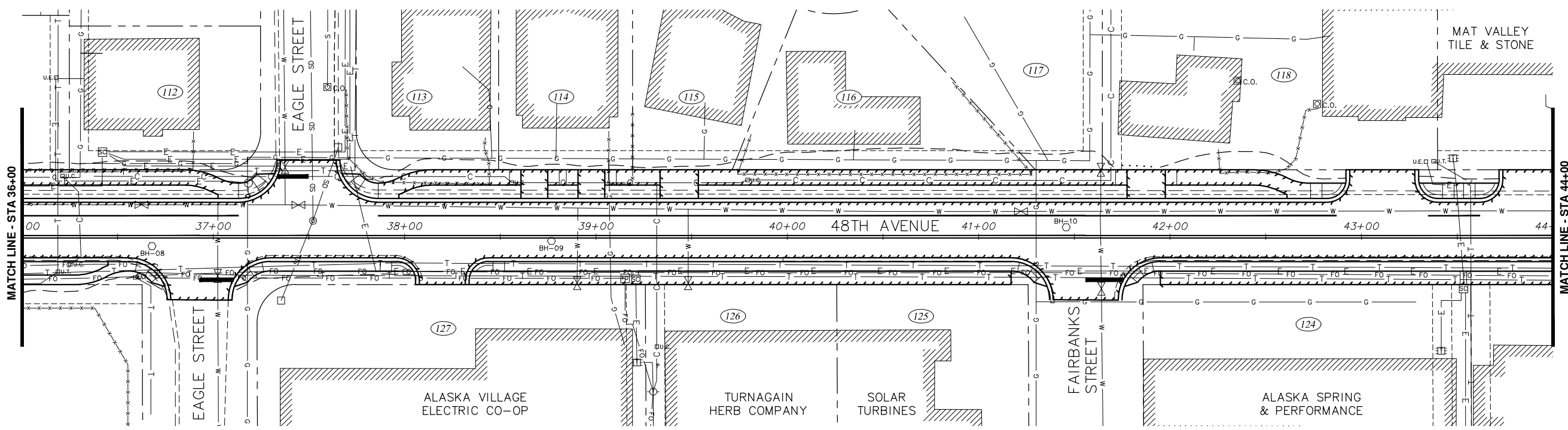
ROADWAY PLAN AND PROFILE

48TH AVENUE
 BOP TO STA 36+00

SCALE: HOR. 1"=30'
 VER. 1"=3'

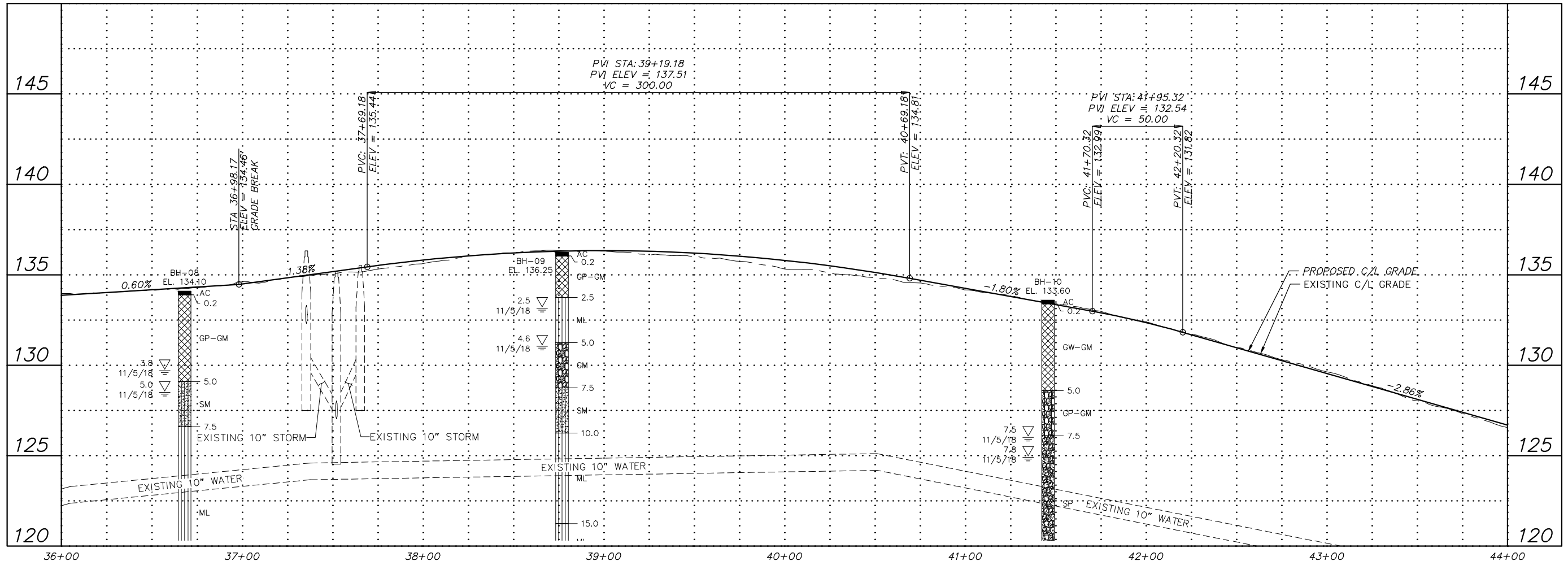
GRID SW1831
 DATE DEC 2019 STATUS DSR

B1.3 of B1.5
 SHEET



NOTES:
 1. SEE ALTERNATIVE 3 PLAN AND PROFILE DRAWINGS FOR 48TH AVENUE PROPOSED STORM DRAIN FACILITIES.

ALTERNATIVE #1



File: s:\jobdata\10143.00_48th Ave And Cordova St Reconstruction\00_CADD\01_Civil\10143.00_Plan And Profile - Roadway_Alt_1.dwg

RECORD DRAWING
 1. DATA PROVIDED BY: _____ TITLE: _____
 THIS WILL SERVE TO CERTIFY THAT THESE RECORD DRAWINGS ARE A TRUE AND ACCURATE REPRESENTATION OF THE PROJECT AS CONSTRUCTED.
 CONTRACTOR: _____
 BY: _____ TITLE: _____ DATE: _____

2. DATA TRANSFERRED BY: _____ TITLE: _____
 COMPANY: _____ DATE: _____

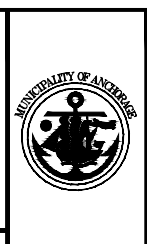
3. BASED ON PERIODIC FIELD OBSERVATIONS BY THE ENGINEER (OR AN INDIVIDUAL UNDER HIS/HER DIRECT SUPERVISION), THE CONTRACTOR-PROVIDED DATA APPEARS TO REPRESENT THE PROJECT AS CONSTRUCTED.
 DATA TRANSFER CHECKED BY: _____ TITLE: _____
 COMPANY: _____ DATE: _____
 BY: _____

DATA	DRAWN BY	CHECKED BY
BASE		
TOPOGRAPHY		
PROFILE		
STORM SEWER		
WATER/SANITARY SEWER		
GAS		
TELEPHONE		
ELECTRIC		
DESIGN		
QUANTITIES		
PRELIMINARY/FINAL		
MUNICIPAL/STATE		

FIELD BOOKS	BM NO.	LOCATION	ELEV.	REV	DATE	DESCRIPTION	BY

GRAPHIC SCALE: 60 30 0 30 60

CRW ENGINEERING GROUP LLC
 3940 ARCTIC BLVD, SUITE 300
 ANCHORAGE, ALASKA 99503
 PHONE: (907) 562-3252
 #AEL0882-AR



PROJECT MANAGEMENT AND ENGINEERING DEPARTMENT

06-26 48TH AVENUE & CORDOVA STREET RECONSTRUCTION SCHED A

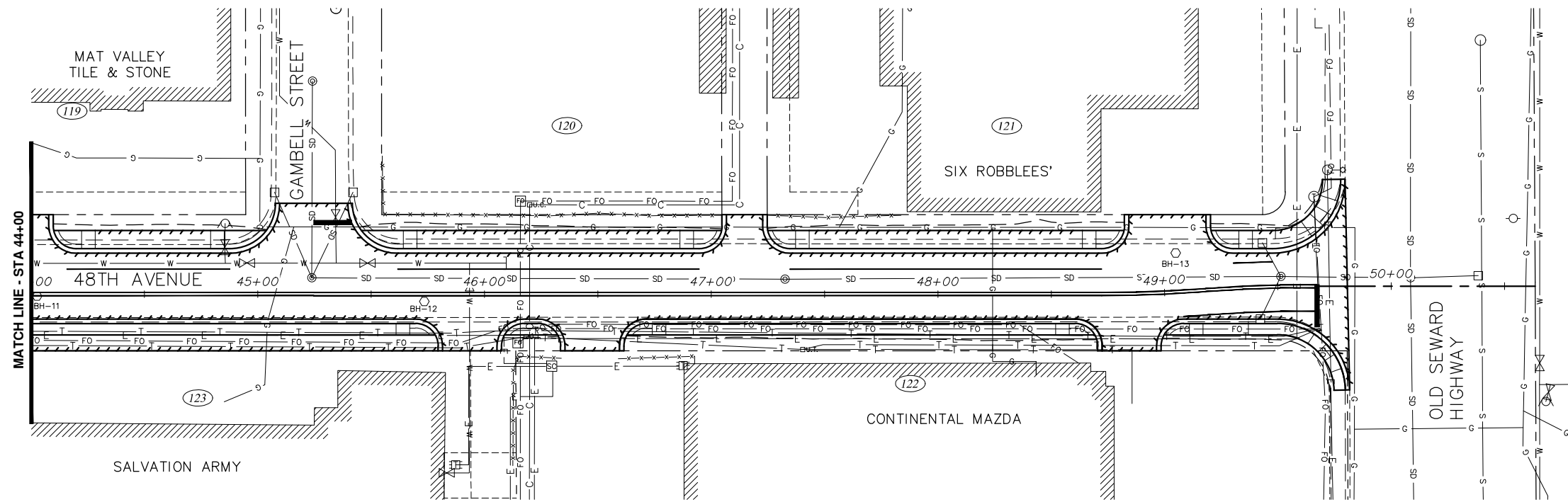
ROADWAY PLAN AND PROFILE

48TH AVENUE
 STA 36+00 TO STA 44+00

SCALE: HOR. 1"=30'
 VER. 1"=3'

GRID SW831
 DATE DEC 2019 STATUS DSR

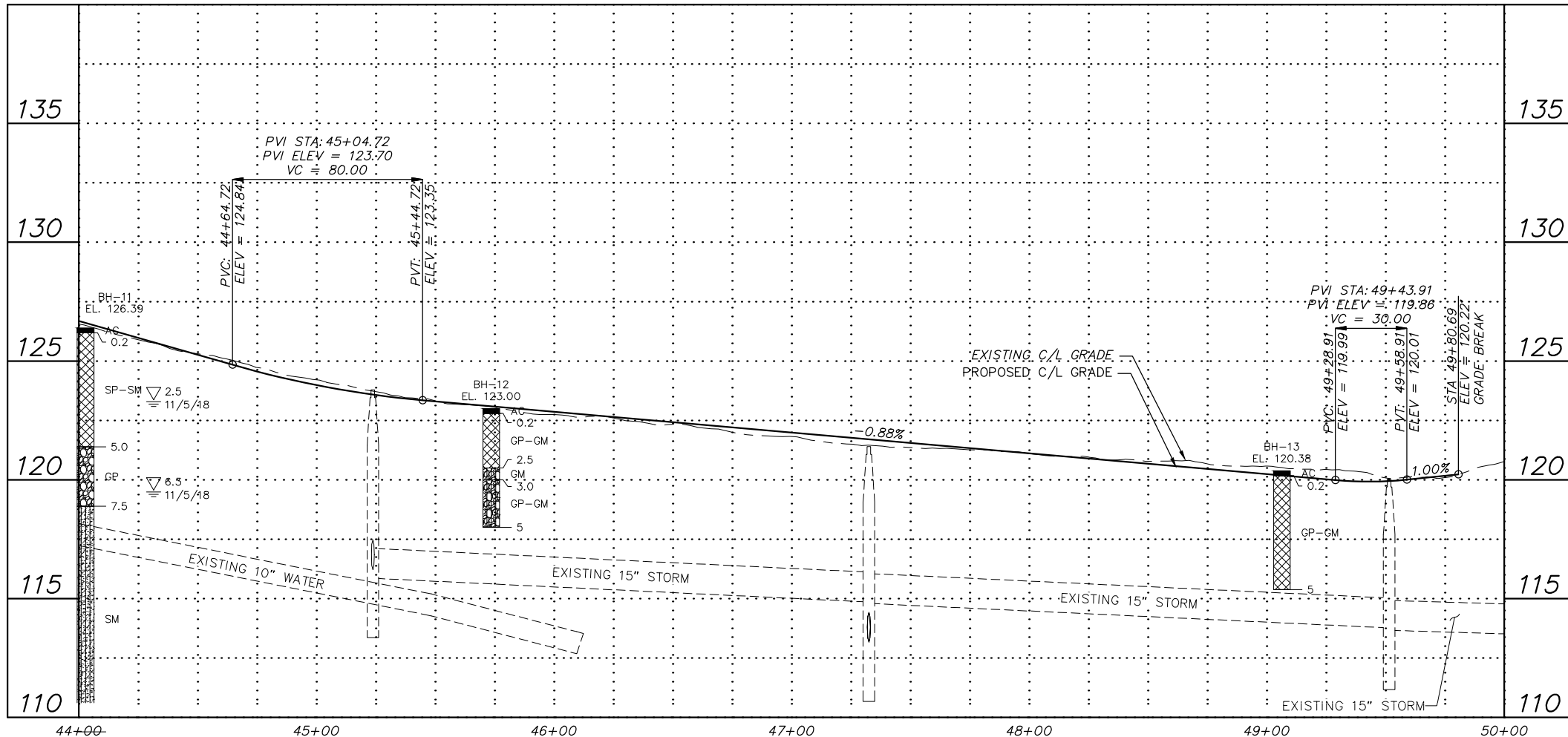
B1.4 of B1.5
 SHEET



NOTES:
 1. SEE ALTERNATIVE 3 PLAN AND PROFILE DRAWINGS FOR 48TH AVENUE PROPOSED STORM DRAIN FACILITIES.



ALTERNATIVE #1



File: s:\jobdata\10143.00_48th Ave And Cordova St Reconstruction\00_CADD\01_Civil\10143.00_Plan And Profile - Roadway_Alt_1.dwg

RECORD DRAWING
 1. DATA PROVIDED BY: _____ TITLE: _____
 THIS WILL SERVE TO CERTIFY THAT THESE RECORD DRAWINGS ARE A TRUE AND ACCURATE REPRESENTATION OF THE PROJECT AS CONSTRUCTED.
 CONTRACTOR: _____ TITLE: _____ DATE: _____
 BY: _____
 2. DATA TRANSFERRED BY: _____ TITLE: _____
 COMPANY: _____ DATE: _____
 3. BASED ON PERIODIC FIELD OBSERVATIONS BY THE ENGINEER (OR AN INDIVIDUAL UNDER HIS/HER DIRECT SUPERVISION), THE CONTRACTOR-PROVIDED DATA APPEARS TO REPRESENT THE PROJECT AS CONSTRUCTED.
 DATA TRANSFER CHECKED BY: _____ TITLE: _____
 COMPANY: _____ DATE: _____
 BY: _____

DATA	DRAWN BY	CHECKED BY
BASE		
TOPOGRAPHY		
PROFILE		
STORM SEWER		
WATER/SANITARY SEWER		
GAS		
TELEPHONE		
ELECTRIC		
DESIGN		
QUANTITIES		
PRELIMINARY/FINAL		
MUNICIPAL/STATE		

FIELD BOOKS	BM NO.	LOCATION	ELEV.	REV	DATE	DESCRIPTION	BY

CRW ENGINEERING GROUP, LLC
 3940 ARCTIC BLVD, SUITE 300
 ANCHORAGE, ALASKA 99503
 PHONE: (907) 562-3252
 #AEL0882-AR

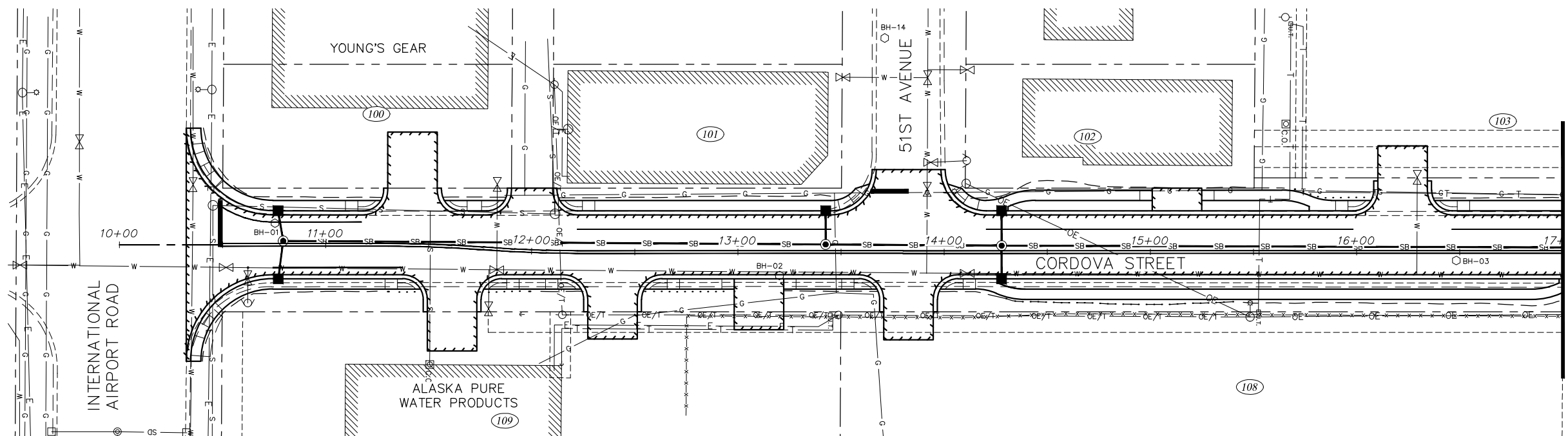


PROJECT MANAGEMENT AND ENGINEERING DEPARTMENT
 06-26 48TH AVENUE & CORDOVA STREET RECONSTRUCTION SCHED A
ROADWAY PLAN AND PROFILE
 48TH AVENUE
 STA 44+00 TO EOP

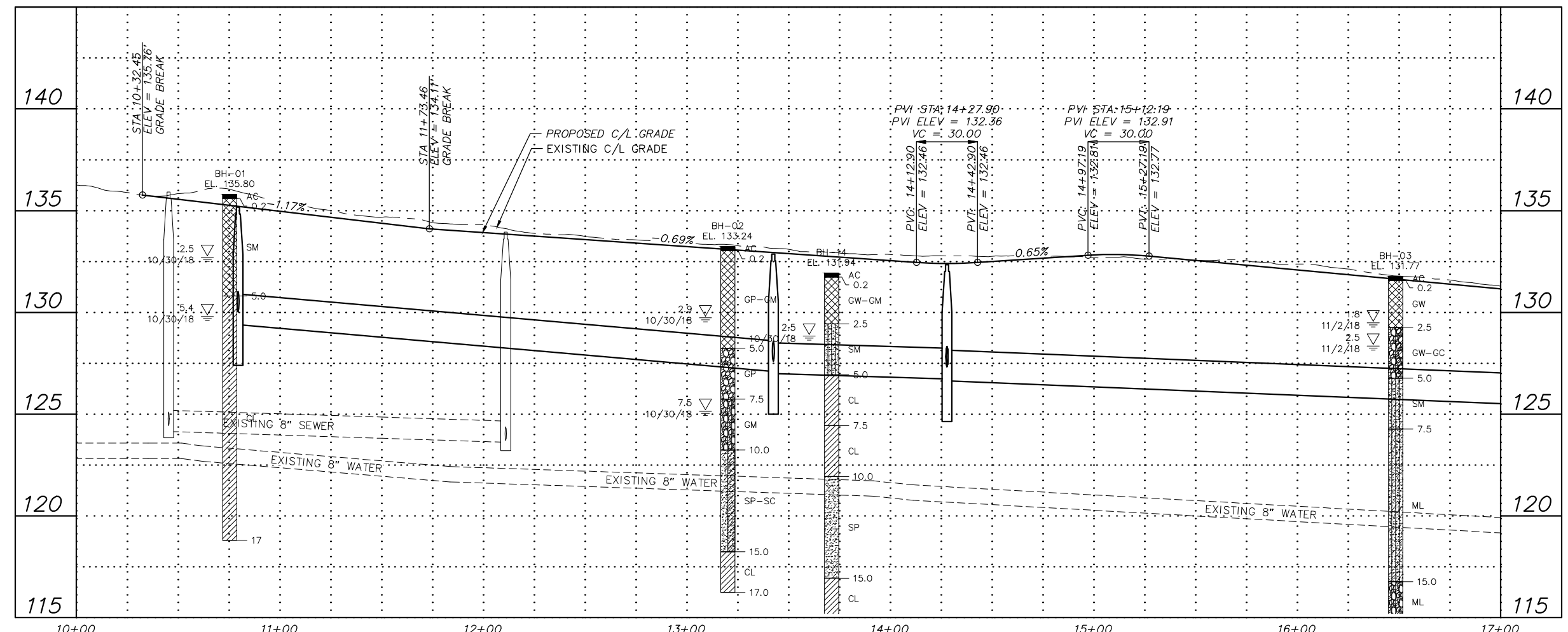
SCALE HOR. 1"=30'
 VER. 1"=3'

GRID SW1831
 DATE DEC 2019 STATUS DSR

B1.5 of B1.5
 SHEET



ALTERNATIVE #2
PREFERRED ALTERNATIVE



File: s:\jobdata\10143.00_48th Ave And Cordova St Reconstruction\00_CADD\01_Civil\10143.00_Plan And Profile - Roadway_Alt_2.dwg

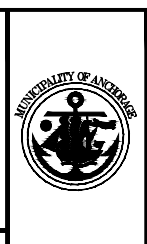
RECORD DRAWING
 1. DATA PROVIDED BY: _____ TITLE: _____
 THIS WILL SERVE TO CERTIFY THAT THESE RECORD DRAWINGS ARE A TRUE AND ACCURATE REPRESENTATION OF THE PROJECT AS CONSTRUCTED.
 CONTRACTOR: _____
 BY: _____ TITLE: _____ DATE: _____
 2. DATA TRANSFERRED BY: _____ TITLE: _____
 COMPANY: _____ DATE: _____
 3. BASED ON PERIODIC FIELD OBSERVATIONS BY THE ENGINEER (OR AN INDIVIDUAL UNDER HIS/HER DIRECT SUPERVISION), THE CONTRACTOR-PROVIDED DATA APPEARS TO REPRESENT THE PROJECT AS CONSTRUCTED.
 DATA TRANSFER CHECKED BY: _____ TITLE: _____
 COMPANY: _____ DATE: _____
 BY: _____

DATA	DRAWN BY	CHECKED BY
BASE		
TOPOGRAPHY		
PROFILE		
STORM SEWER		
WATER/SANITARY SEWER		
GAS		
TELEPHONE		
ELECTRIC		
DESIGN		
QUANTITIES		
PRELIMINARY/FINAL		
MUNICIPAL/STATE		

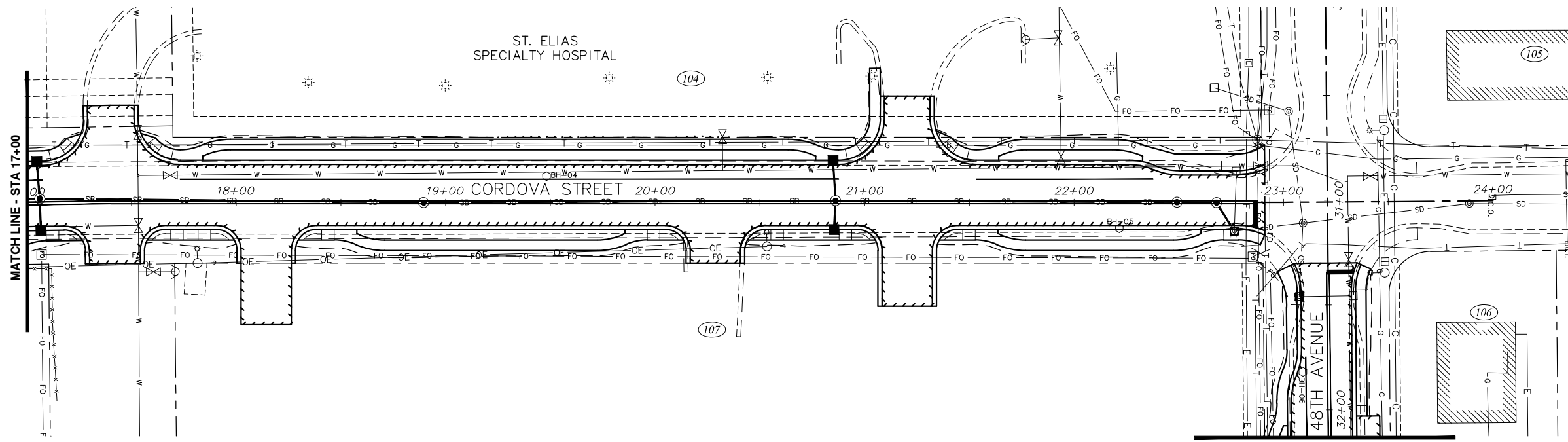
FIELD BOOKS	BM NO.	LOCATION	ELEV.	REV	DATE	DESCRIPTION	BY

CRW ENGINEERING GROUP, LLC
 3940 ARCTIC BLVD, SUITE 300
 ANCHORAGE, ALASKA 99503
 PHONE: (907) 562-3252
 #AEL882-AR

CONSULTANT
 SEAL

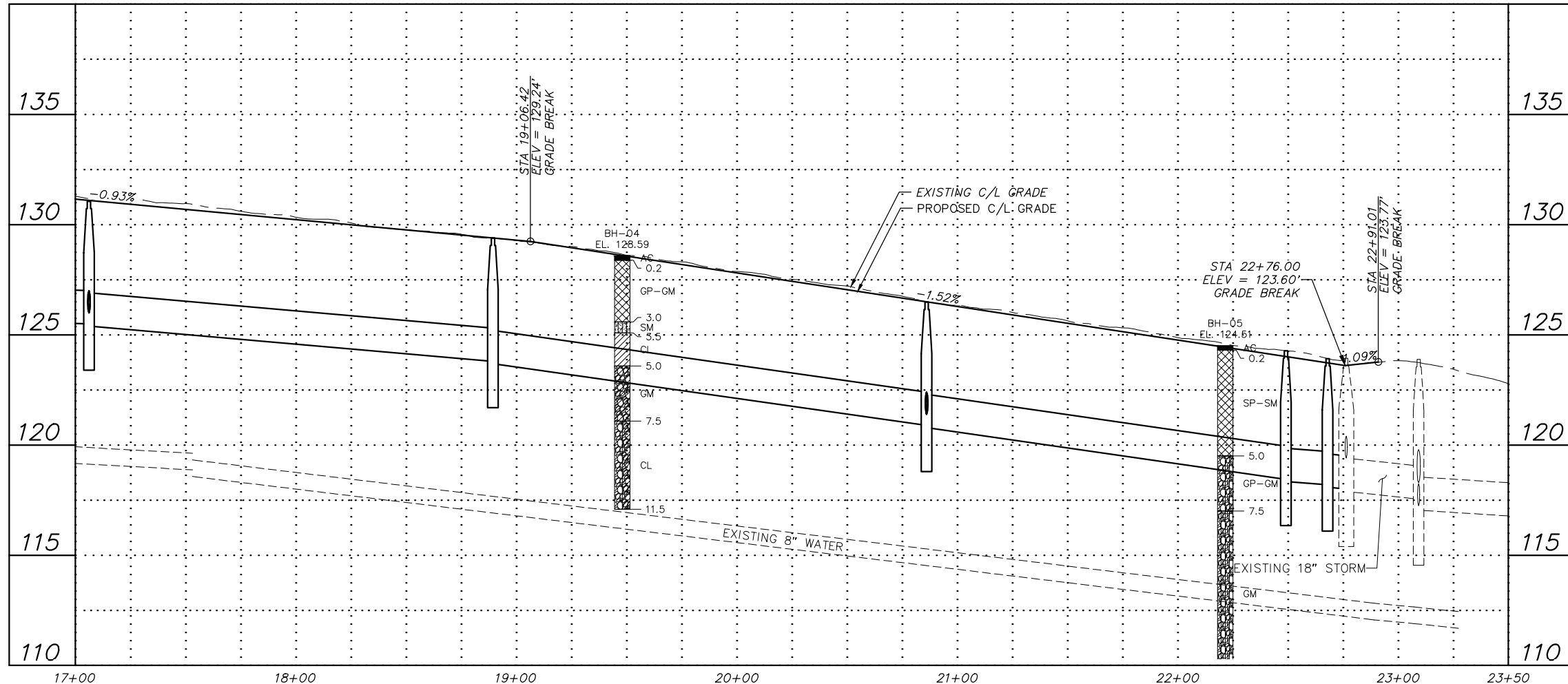


PROJECT MANAGEMENT AND ENGINEERING DEPARTMENT
 06-26 48TH AVENUE & CORDOVA STREET RECONSTRUCTION SCHED A
ROADWAY PLAN AND PROFILE
 CORDOVA STREET
 BOP TO STA 17+00
 SCALE: HOR. 1"=30'
 VER. 1"=3'
 GRID SW1831
 DATE DEC 2019 STATUS DSR SHEET B2.1 of B2.5



SEE SHEET B1.3

ALTERNATIVE #2
PREFERRED ALTERNATIVE



File: s:\jobdata\10143.00_48th Ave And Cordova St Reconstruction\00_CADD\01_Civil\10143.00_Plan And Profile - Roadway_Alt_2.dwg

RECORD DRAWING
 1. DATA PROVIDED BY: _____ TITLE: _____
 THIS WILL SERVE TO CERTIFY THAT THESE RECORD DRAWINGS ARE A TRUE AND ACCURATE REPRESENTATION OF THE PROJECT AS CONSTRUCTED.
 CONTRACTOR: _____ DATE: _____
 BY: _____
 2. DATA TRANSFERRED BY: _____ TITLE: _____
 COMPANY: _____ DATE: _____
 3. BASED ON PERIODIC FIELD OBSERVATIONS BY THE ENGINEER (OR AN INDIVIDUAL UNDER HIS/HER DIRECT SUPERVISION), THE CONTRACTOR-PROVIDED DATA APPEARS TO REPRESENT THE PROJECT AS CONSTRUCTED.
 DATA TRANSFER CHECKED BY: _____ TITLE: _____
 COMPANY: _____ DATE: _____
 BY: _____

DATA	DRAWN BY	CHECKED BY
BASE		
TOPOGRAPHY		
PROFILE		
STORM SEWER		
WATER/SANITARY SEWER		
GAS		
TELEPHONE		
ELECTRIC		
DESIGN		
QUANTITIES		
PRELIMINARY/FINAL		
MUNICIPAL/STATE		

FIELD BOOKS	BM NO.	LOCATION	ELEV.	REV	DATE	DESCRIPTION	BY

GRAPHIC SCALE: 60 30 0 30 60

CRW ENGINEERING GROUP LLC
 3940 ARCTIC BLVD, SUITE 300
 ANCHORAGE, ALASKA 99503
 PHONE: (907) 562-3252
 #AEL882-AR



PROJECT MANAGEMENT AND ENGINEERING DEPARTMENT

06-26 48TH AVENUE & CORDOVA STREET RECONSTRUCTION SCHED A

ROADWAY PLAN AND PROFILE

CORDOVA STREET
STA 17+00 TO EOP

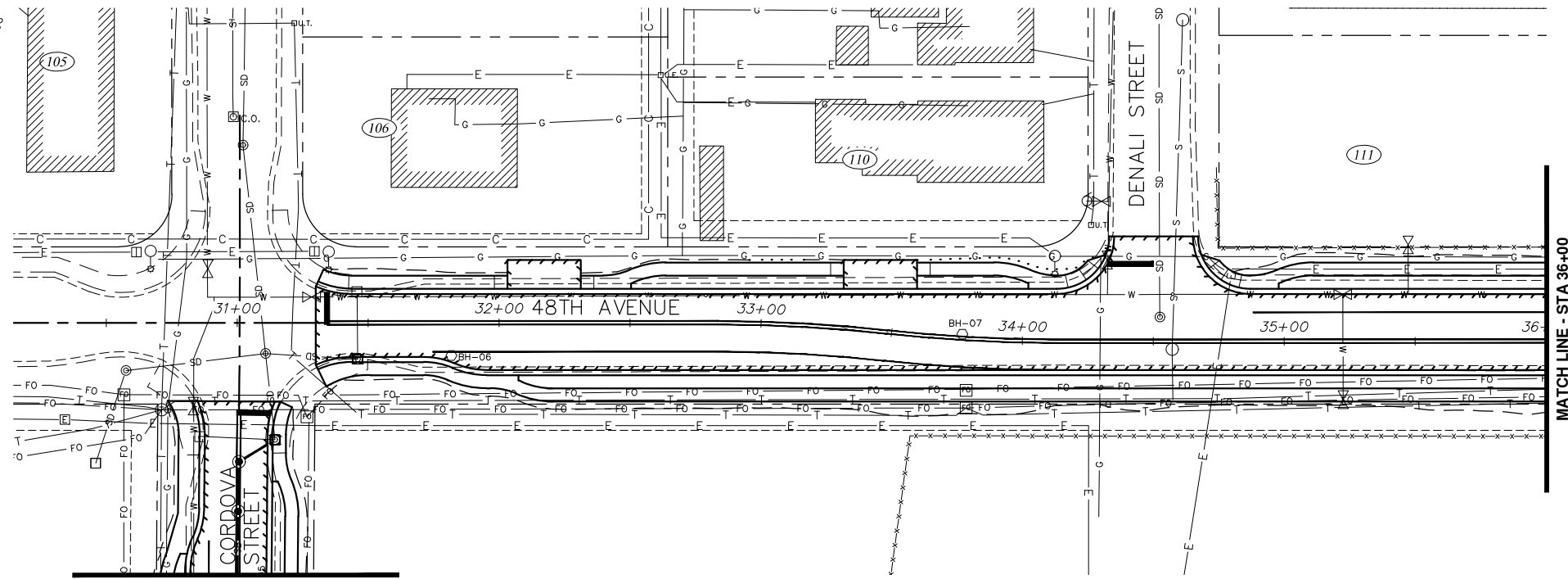
SCALE: HOR. 1"=30'
VER. 1"=3'

GRID: SW1831
DATE: DEC 2019
STATUS: DSR

B2.2 of B2.5
SHEET

NOTES:

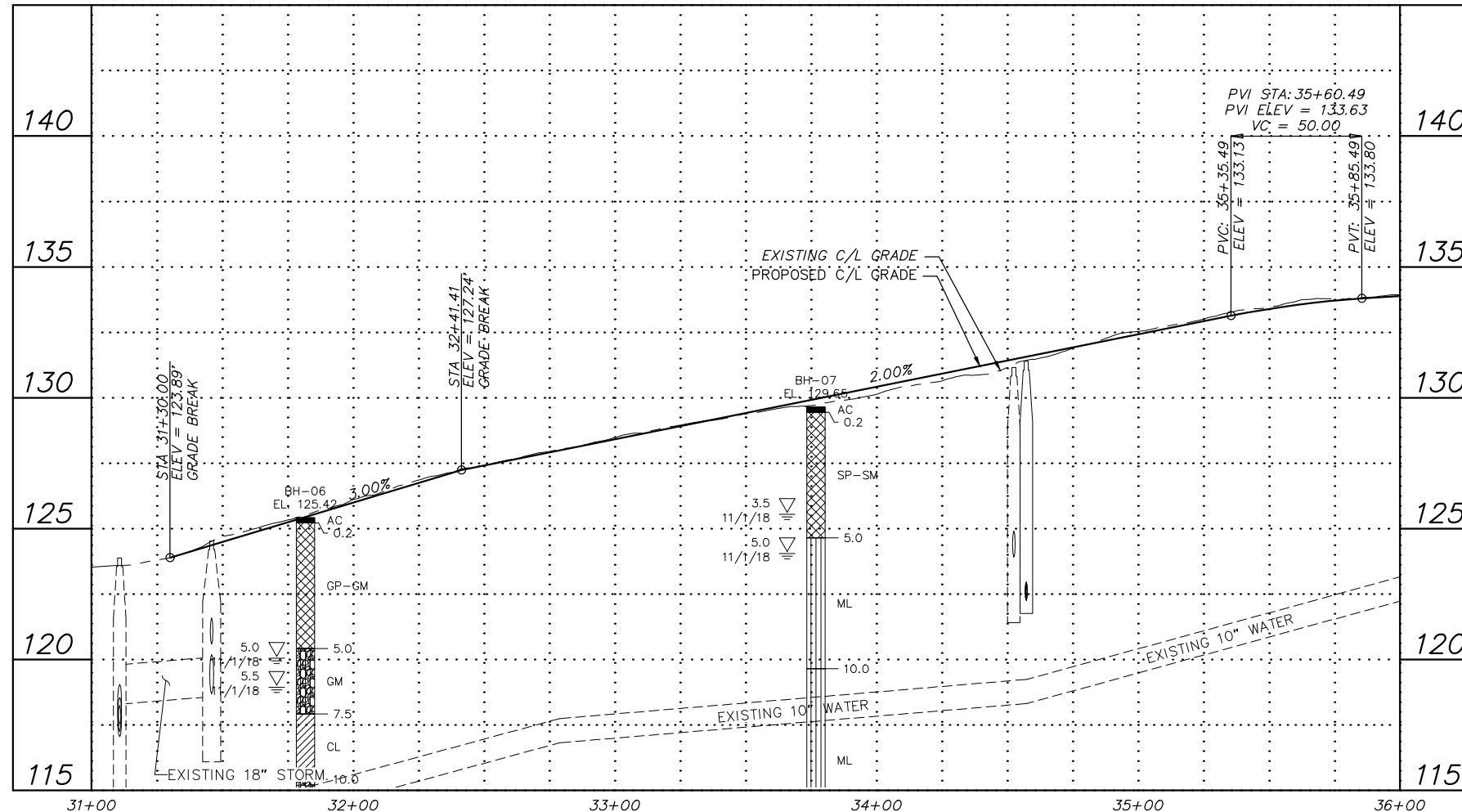
- SEE ALTERNATIVE 3 PLAN AND PROFILE DRAWINGS FOR 48TH AVENUE PROPOSED STORM DRAIN FACILITIES.



SEE SHEET B1.2

MATCH LINE - STA 36+00

ALTERNATIVE #2



File: s:\jobdata\10143.00_48th Ave And Cordova St Reconstruction\00_CADD\01_Civil\10143.00_Plan And Profile - Roadway_Alt_2.dwg

RECORD DRAWING

1. DATA PROVIDED BY: _____ TITLE: _____
 THIS WILL SERVE TO CERTIFY THAT THESE RECORD DRAWINGS ARE A TRUE AND ACCURATE REPRESENTATION OF THE PROJECT AS CONSTRUCTED.
 CONTRACTOR: _____ DATE: _____

2. DATA TRANSFERRED BY: _____ TITLE: _____
 COMPANY: _____ DATE: _____

3. BASED ON PERIODIC FIELD OBSERVATIONS BY THE ENGINEER (OR AN INDIVIDUAL UNDER HIS/HER DIRECT SUPERVISION), THE CONTRACTOR-PROVIDED DATA APPEARS TO REPRESENT THE PROJECT AS CONSTRUCTED.
 DATA TRANSFER CHECKED BY: _____ TITLE: _____
 COMPANY: _____ DATE: _____
 BY: _____

DATA	DRAWN BY	CHECKED BY
BASE		
TOPOGRAPHY		
PROFILE		
STORM SEWER		
WATER/SANITARY SEWER		
GAS		
TELEPHONE		
ELECTRIC		
DESIGN		
QUANTITIES		
PRELIMINARY/FINAL		
MUNICIPAL/STATE		

DESIGN	STAKING	ASBUILT	CONTRACTOR	INSPECTOR

GRAPHIC SCALE: 60 30 0 30 60

3940 ARCTIC BLVD, SUITE 300
 ANCHORAGE, ALASKA 99503
 PHONE: (907) 562-3252
 #AEL882-AK



PROJECT MANAGEMENT AND ENGINEERING DEPARTMENT

06-26 48TH AVENUE & CORDOVA STREET RECONSTRUCTION SCHED A

ROADWAY PLAN AND PROFILE

48TH AVENUE
 BOP TO STA 36+00

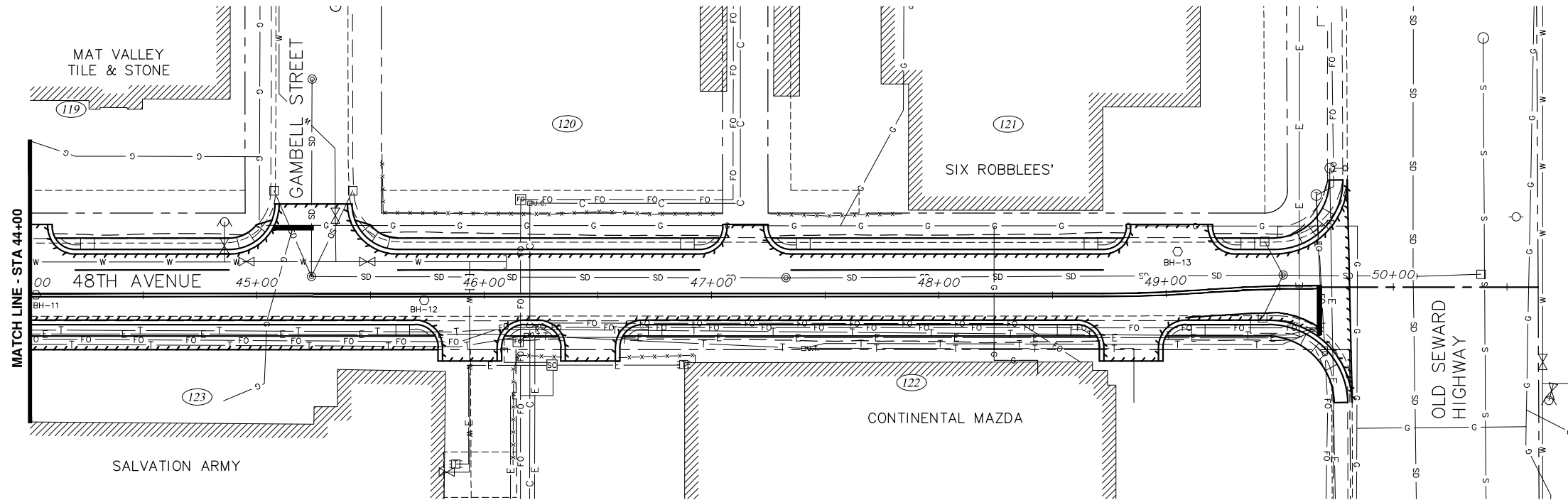
SCALE: HOR. 1"=30'
 VER. 1"=3'

GRID: SW1831
 DATE: DEC 2019
 STATUS: DSR

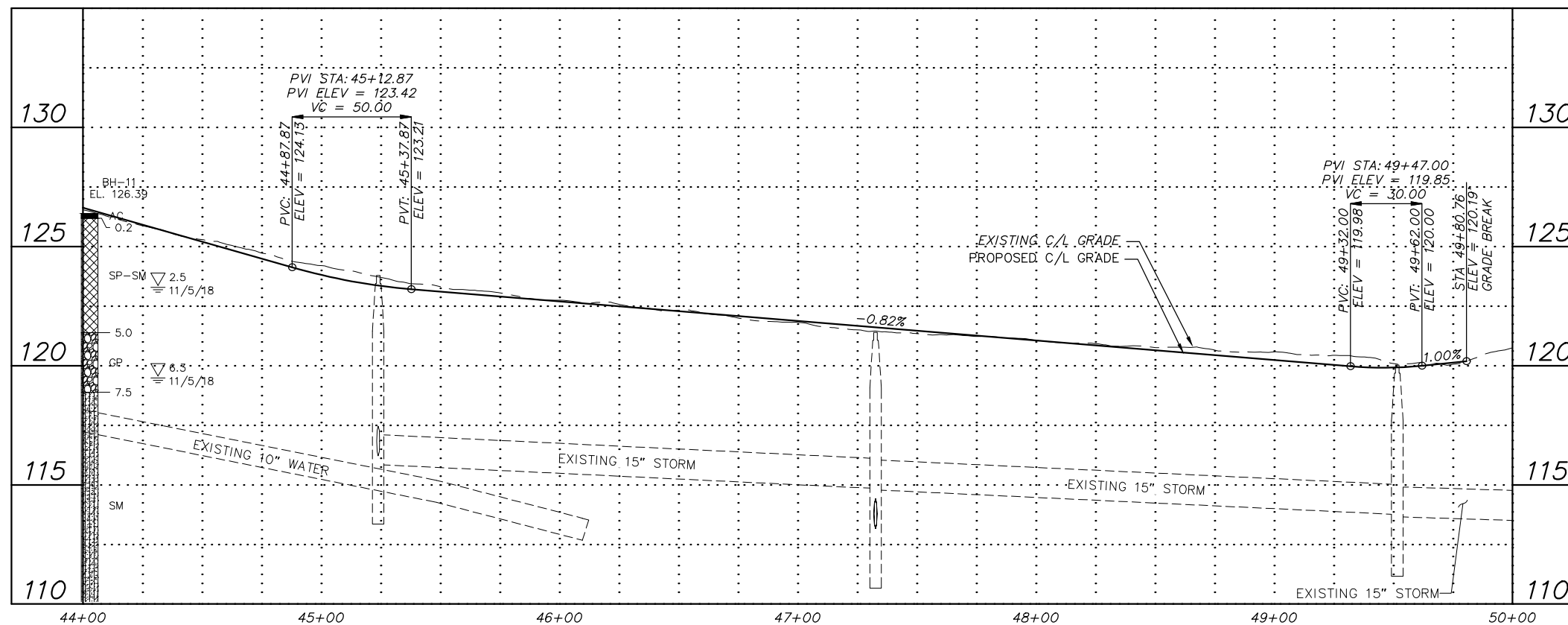
B2.3 of B2.5
 SHEET

NOTES:

- SEE ALTERNATIVE 3 PLAN AND PROFILE DRAWINGS FOR 48TH AVENUE PROPOSED STORM DRAIN FACILITIES.



ALTERNATIVE #2



File: J:\jobdata\10143.00_48th Ave And Cordova St Reconstruction\00_CADD\01_Working Set\01_Civil\10143.00_Plan And Profile - Roadway_Alt_2.dwg

RECORD DRAWING

1. DATA PROVIDED BY: _____ TITLE: _____
 THIS WILL SERVE TO CERTIFY THAT THESE RECORD DRAWINGS ARE A TRUE AND ACCURATE REPRESENTATION OF THE PROJECT AS CONSTRUCTED.
 CONTRACTOR: _____ DATE: _____

2. DATA TRANSFERRED BY: _____ TITLE: _____
 COMPANY: _____ DATE: _____

3. BASED ON PERIODIC FIELD OBSERVATIONS BY THE ENGINEER (OR AN INDIVIDUAL UNDER HIS/HER DIRECT SUPERVISION), THE CONTRACTOR-PROVIDED DATA APPEARS TO REPRESENT THE PROJECT AS CONSTRUCTED.
 DATA TRANSFER CHECKED BY: _____ TITLE: _____
 COMPANY: _____ DATE: _____

DATA	DRAWN BY	CHECKED BY
BASE		
TOPOGRAPHY		
PROFILE		
STORM SEWER		
WATER/SANITARY SEWER		
GAS		
TELEPHONE		
ELECTRIC		
DESIGN		
QUANTITIES		
PRELIMINARY/FINAL		
MUNICIPAL/STATE		

FIELD BOOKS	BM NO.	LOCATION	ELEV.	REV	DATE	DESCRIPTION	BY

GRAPHIC SCALE: 60 30 0 30 60

3940 ARCTIC BLVD, SUITE 300
 ANCHORAGE, ALASKA 99503
 PHONE: (907) 562-3252
 #AEL882-AR



PROJECT MANAGEMENT AND ENGINEERING DEPARTMENT

06-26 48TH AVENUE & CORDOVA STREET RECONSTRUCTION SCHED A

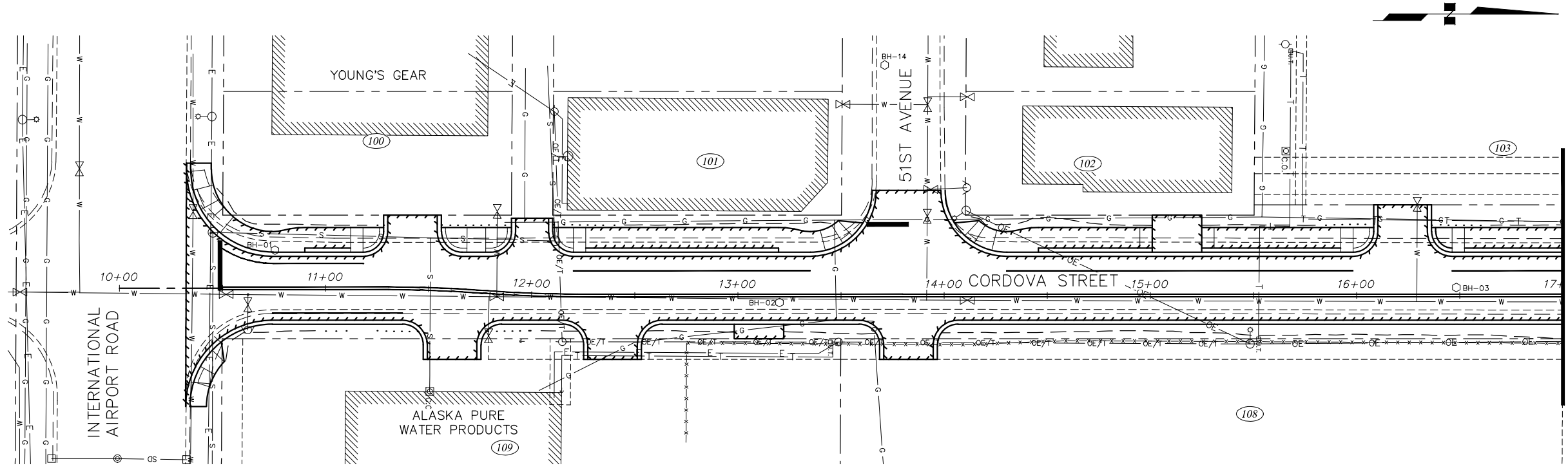
ROADWAY PLAN AND PROFILE

48TH AVENUE
 STA 44+00 TO EOP

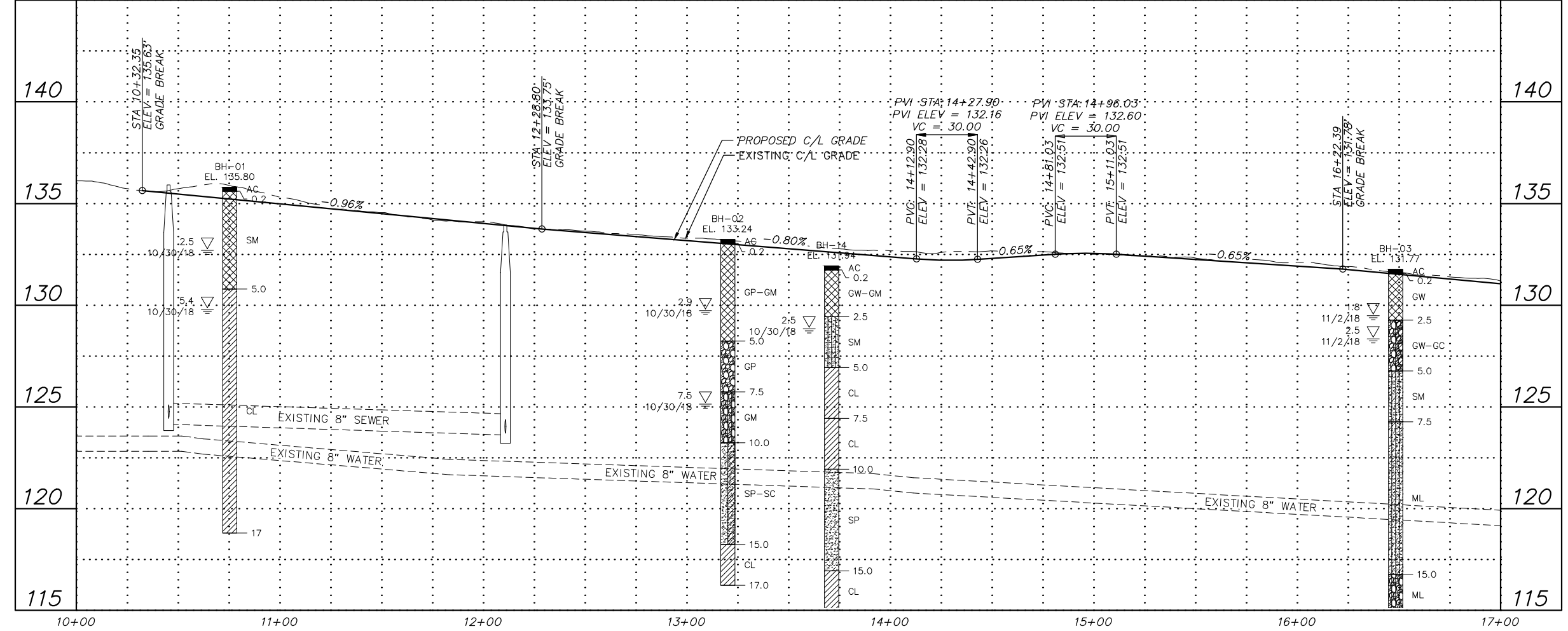
SCALE: HOR. 1"=30'
 VER. 1"=3'

GRID SW831
 DATE JULY 2019 STATUS DSR

B2.5 of B2.5
 SHEET



NOTES:
 1. SEE ALTERNATIVE 2 PLAN AND PROFILE DRAWINGS FOR CORDOVA STREET PROPOSED STORM DRAIN FACILITIES.



ALTERNATIVE #3

File: s:\jobdata\10143.00_48th Ave And Cordova St Reconstruction\00_CADD\01_Civil\01\10143.00_Plan And Profile - Roadway_Alt_3.dwg

RECORD DRAWING
 1. DATA PROVIDED BY: _____ TITLE: _____
 THIS WILL SERVE TO CERTIFY THAT THESE RECORD DRAWINGS ARE A TRUE AND ACCURATE REPRESENTATION OF THE PROJECT AS CONSTRUCTED.
 CONTRACTOR: _____
 BY: _____ TITLE: _____ DATE: _____
 2. DATA TRANSFERRED BY: _____ TITLE: _____
 COMPANY: _____ DATE: _____
 3. BASED ON PERIODIC FIELD OBSERVATIONS BY THE ENGINEER (OR AN INDIVIDUAL UNDER HIS/HER DIRECT SUPERVISION), THE CONTRACTOR-PROVIDED DATA APPEARS TO REPRESENT THE PROJECT AS CONSTRUCTED.
 DATA TRANSFER CHECKED BY: _____ TITLE: _____
 COMPANY: _____ DATE: _____
 BY: _____

DATA	DRAWN BY	CHECKED BY
BASE		
TOPOGRAPHY		
PROFILE		
STORM SEWER		
WATER/SANITARY SEWER		
GAS		
TELEPHONE		
ELECTRIC		
DESIGN		
QUANTITIES		
PRELIMINARY/FINAL		
MUNICIPAL/STATE		

FIELD BOOKS	BM NO.	LOCATION	ELEV.	REV	DATE	DESCRIPTION	BY

GRAPHIC SCALE: 60 30 0 30 60

CRW ENGINEERING GROUP, LLC
 3940 ARCTIC BLVD, SUITE 300
 ANCHORAGE, ALASKA 99503
 PHONE: (907) 562-3252
 #AEL882-AK

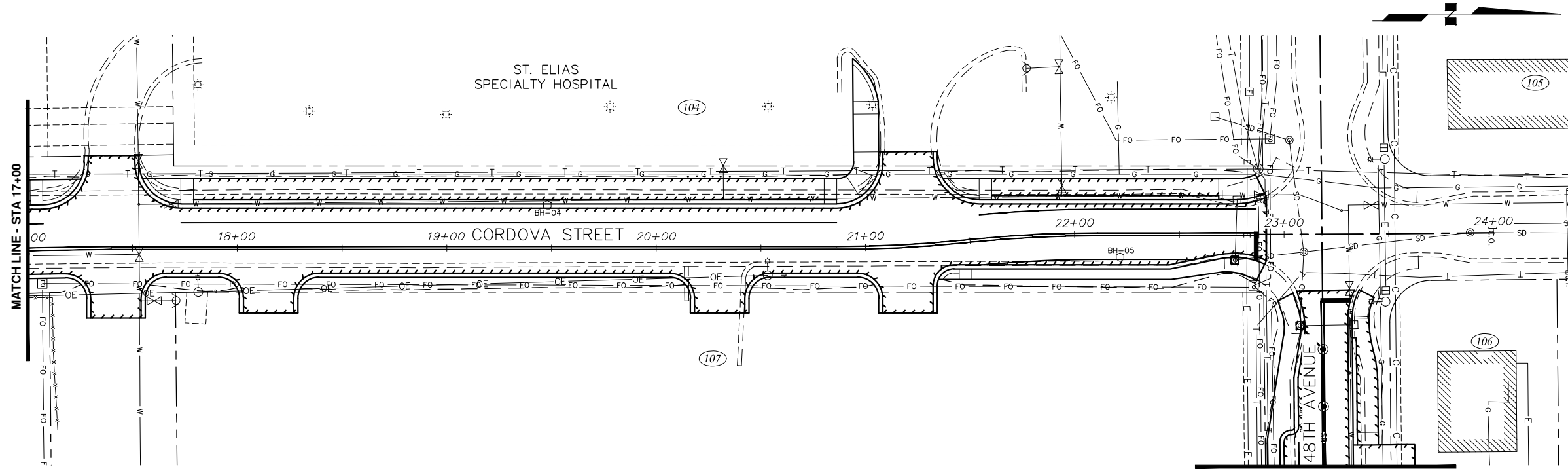


PROJECT MANAGEMENT AND ENGINEERING DEPARTMENT
 06-26 48TH AVENUE & CORDOVA STREET RECONSTRUCTION SCHED A
ROADWAY PLAN AND PROFILE
 CORDOVA STREET
 BOP TO STA 17+00

SCALE: HOR. 1"=30'
 VER. 1"=3'

GRID SW1831
 DATE DEC 2019 STATUS DSR

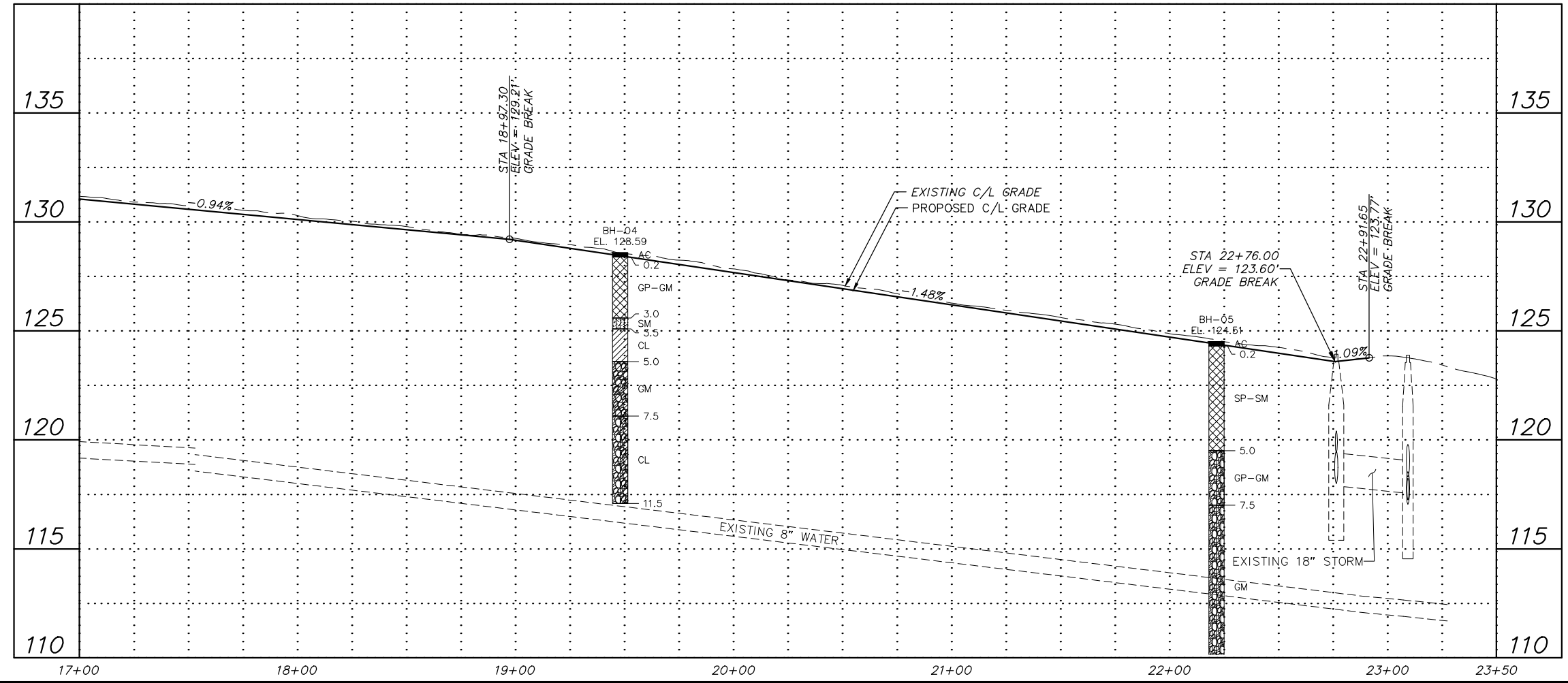
B3.1 of B3.5 SHEET



NOTES:
 1. SEE ALTERNATIVE 2 PLAN AND PROFILE DRAWINGS FOR CORDOVA STREET PROPOSED STORM DRAIN FACILITIES.

SEE SHEET B1.3

ALTERNATIVE #3



File: s:\jobdata\10143.00_48th Ave And Cordova St Reconstruction\00_CADD\01_Civil\0143.00_Plan And Profile - Roadway_Alt_3.dwg

RECORD DRAWING
 1. DATA PROVIDED BY: _____ TITLE: _____
 THIS WILL SERVE TO CERTIFY THAT THESE RECORD DRAWINGS ARE A TRUE AND ACCURATE REPRESENTATION OF THE PROJECT AS CONSTRUCTED.
 CONTRACTOR: _____
 BY: _____ TITLE: _____ DATE: _____
 2. DATA TRANSFERRED BY: _____ TITLE: _____
 COMPANY: _____ DATE: _____
 3. BASED ON PERIODIC FIELD OBSERVATIONS BY THE ENGINEER (OR AN INDIVIDUAL UNDER HIS/HER DIRECT SUPERVISION), THE CONTRACTOR-PROVIDED DATA APPEARS TO REPRESENT THE PROJECT AS CONSTRUCTED.
 DATA TRANSFER CHECKED BY: _____ TITLE: _____
 COMPANY: _____ DATE: _____
 BY: _____

DATA	DRAWN BY	CHECKED BY
BASE		
TOPOGRAPHY		
PROFILE		
STORM SEWER		
WATER/SANITARY SEWER		
GAS		
TELEPHONE		
ELECTRIC		
DESIGN		
QUANTITIES		
PRELIMINARY/FINAL		
MUNICIPAL/STATE		

FIELD BOOKS	BM NO.	LOCATION	ELEV.	REV	DATE	DESCRIPTION	BY

GRAPHIC SCALE: 60 30 0 30 60

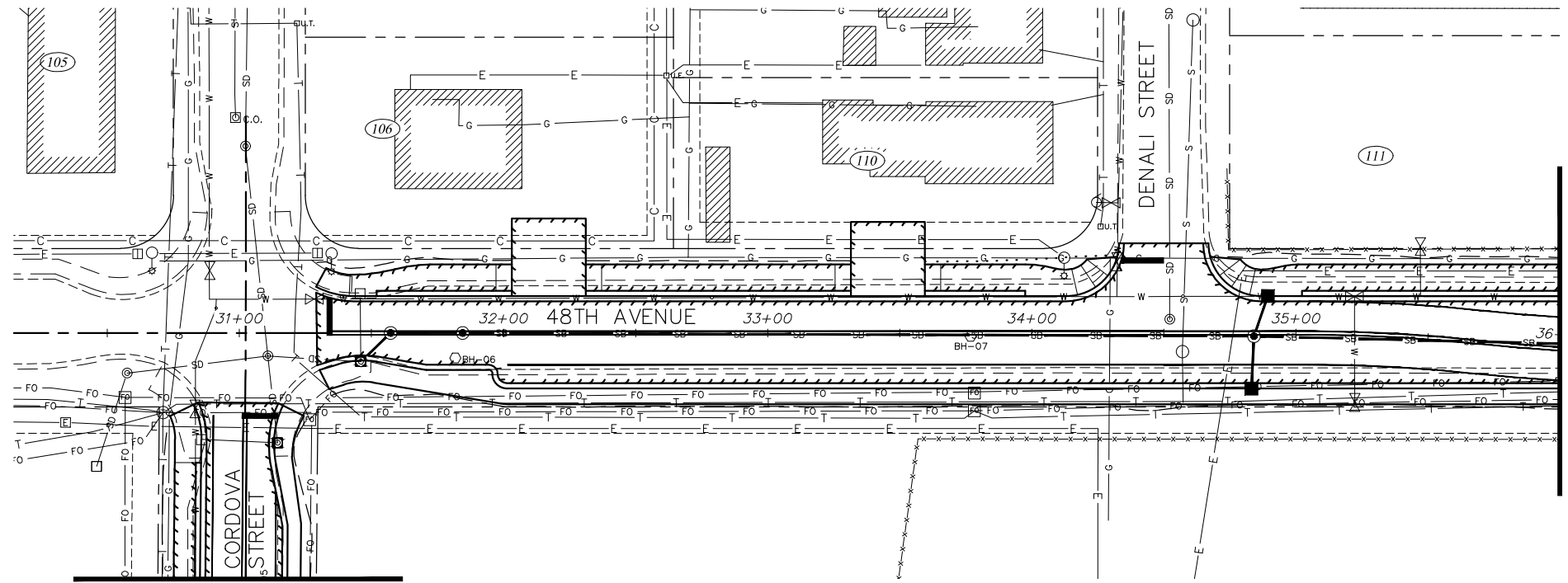
CRW ENGINEERING GROUP LLC
 3940 ARCTIC BLVD, SUITE 300
 ANCHORAGE, ALASKA 99503
 PHONE: (907) 562-3252
 #AEL882-AK



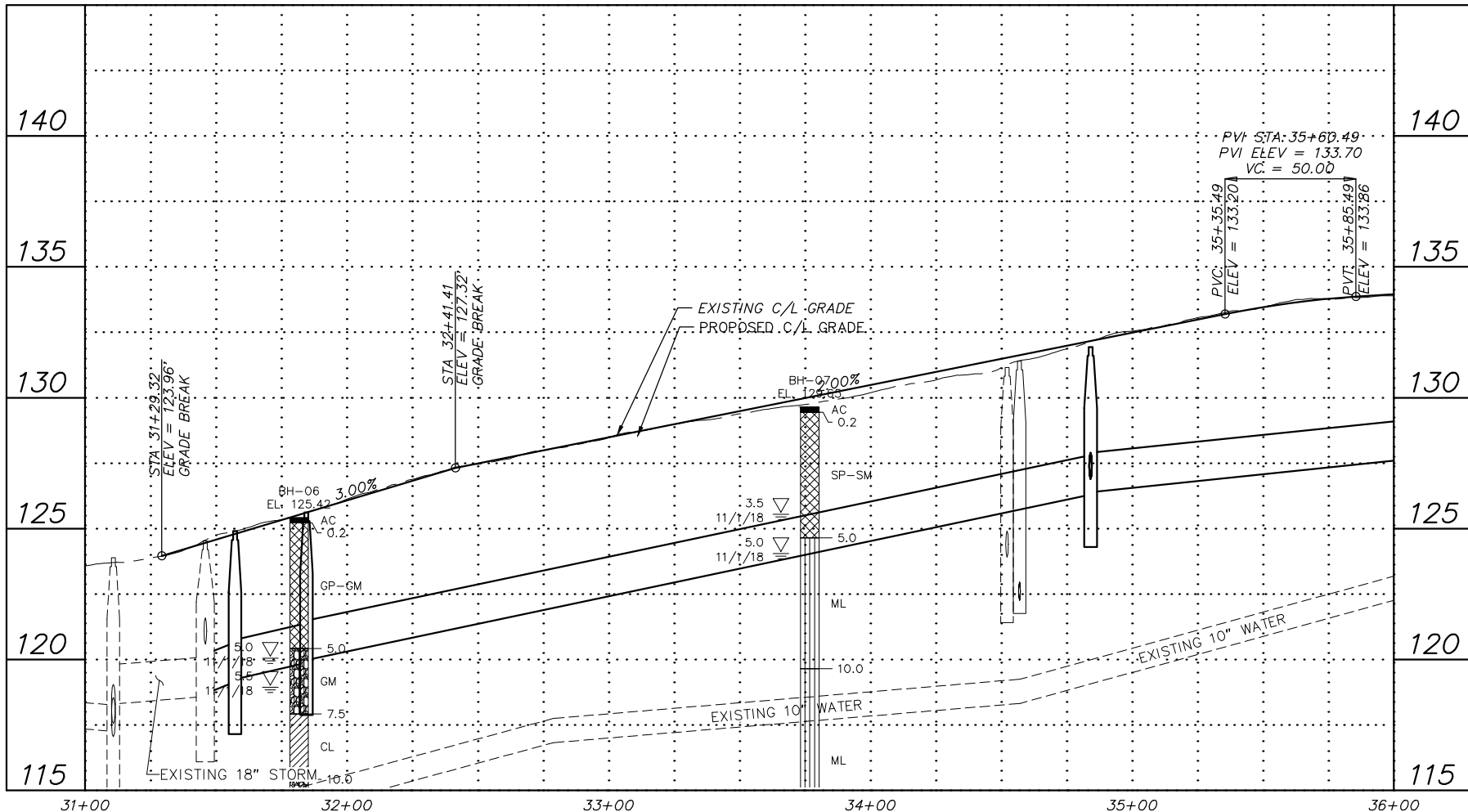
PROJECT MANAGEMENT AND ENGINEERING DEPARTMENT
 06-26 48TH AVENUE & CORDOVA STREET RECONSTRUCTION SCHED A
ROADWAY PLAN AND PROFILE
 CORDOVA STREET STA 17+00 TO EOP

SCALE: HOR. 1"=30' VER. 1"=3'
 GRID: SW1831
 DATE: DEC 2019 STATUS: DSR

B3.2 of B3.5
 SHEET



ALTERNATIVE #3
PREFERRED ALTERNATIVE



File: s:\jobdata\10143.00_48th Ave And Cordova St Reconstruction\00_CADD\01_Civil\0143.00_Plan And Profile - Roadway_Alt_3.dwg

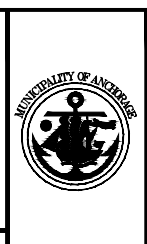
RECORD DRAWING
 1. DATA PROVIDED BY: _____ TITLE: _____
 THIS WILL SERVE TO CERTIFY THAT THESE RECORD DRAWINGS ARE A TRUE AND ACCURATE REPRESENTATION OF THE PROJECT AS CONSTRUCTED.
 CONTRACTOR: _____ TITLE: _____ DATE: _____
 BY: _____
 2. DATA TRANSFERRED BY: _____ TITLE: _____
 COMPANY: _____ DATE: _____
 3. BASED ON PERIODIC FIELD OBSERVATIONS BY THE ENGINEER (OR AN INDIVIDUAL UNDER HIS/HER DIRECT SUPERVISION), THE CONTRACTOR-PROVIDED DATA APPEARS TO REPRESENT THE PROJECT AS CONSTRUCTED.
 DATA TRANSFER CHECKED BY: _____ TITLE: _____
 COMPANY: _____ DATE: _____
 BY: _____

DATA	DRAWN BY	CHECKED BY
BASE		
TOPOGRAPHY		
PROFILE		
STORM SEWER		
WATER/SANITARY SEWER		
GAS		
TELEPHONE		
ELECTRIC		
DESIGN		
QUANTITIES		
PRELIMINARY/FINAL		
MUNICIPAL/STATE		

FIELD BOOKS	BM NO.	LOCATION	ELEV.	REV	DATE	DESCRIPTION	BY

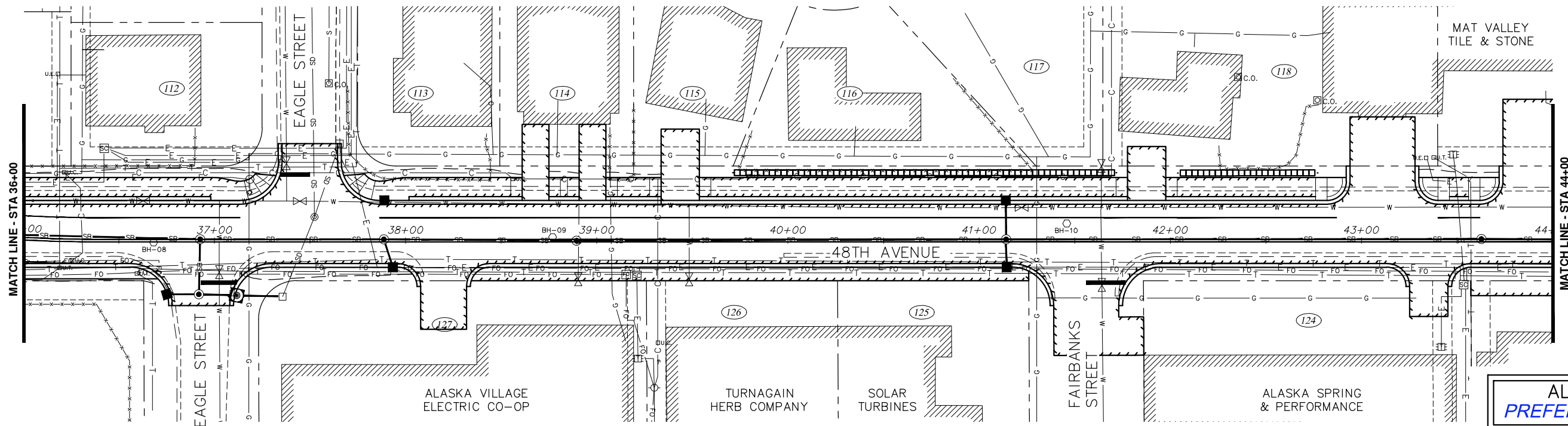
CRW ENGINEERING GROUP LLC
 3940 ARCTIC BLVD, SUITE 300
 ANCHORAGE, ALASKA 99503
 PHONE: (907) 562-3252
 #AEL082-AR

REVISIONS	CONSULTANT	SEAL

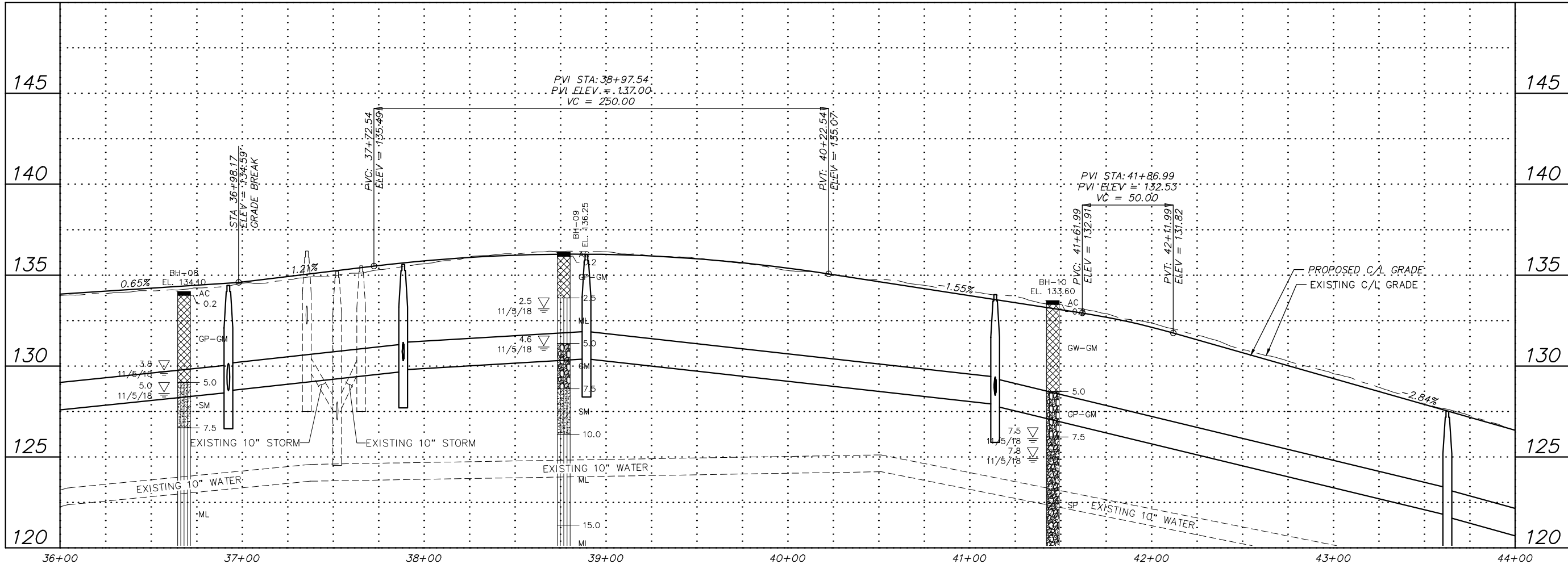


PROJECT MANAGEMENT AND ENGINEERING DEPARTMENT
 06-26 48TH AVENUE & CORDOVA STREET RECONSTRUCTION SCHED A
ROADWAY PLAN AND PROFILE
 48TH AVENUE
 BOP TO STA 36+00

SCALE HOR. 1"=30'	GRID SW1831	B3.3 of B3.5
VER. 1"=3'	DATE DEC 2019 STATUS DSR	



ALTERNATIVE #3
PREFERRED ALTERNATIVE



File: s:\jobdata\10143.00_48th Ave And Cordova St Reconstruction\00_CADD\01_Civil\0143.00_Plan And Profile - Roadway_Alt_3.dwg

RECORD DRAWING
 1. DATA PROVIDED BY: _____ TITLE: _____
 THIS WILL SERVE TO CERTIFY THAT THESE RECORD DRAWINGS ARE A TRUE AND ACCURATE REPRESENTATION OF THE PROJECT AS CONSTRUCTED.
 CONTRACTOR: _____
 BY: _____ TITLE: _____ DATE: _____
 2. DATA TRANSFERRED BY: _____ TITLE: _____
 COMPANY: _____ DATE: _____
 3. BASED ON PERIODIC FIELD OBSERVATIONS BY THE ENGINEER (OR AN INDIVIDUAL UNDER HIS/HER DIRECT SUPERVISION), THE CONTRACTOR-PROVIDED DATA APPEARS TO REPRESENT THE PROJECT AS CONSTRUCTED.
 DATA TRANSFER CHECKED BY: _____ TITLE: _____
 COMPANY: _____ DATE: _____
 BY: _____

DATA	DRAWN BY	CHECKED BY
BASE		
TOPOGRAPHY		
PROFILE		
STORM SEWER		
WATER/SANITARY SEWER		
GAS		
TELEPHONE		
ELECTRIC		
DESIGN		
QUANTITIES		
PRELIMINARY/FINAL		
MUNICIPAL/STATE		

FIELD BOOKS	BM NO.	LOCATION	ELEV.	REV	DATE	DESCRIPTION	BY

GRAPHIC SCALE: 60 30 0 30 60

CRW ENGINEERING GROUP LLC
 3940 ARCTIC BLVD, SUITE 300
 ANCHORAGE, ALASKA 99503
 PHONE: (907) 562-3252
 #AECLE882-AR



PROJECT MANAGEMENT AND ENGINEERING DEPARTMENT

06-26 48TH AVENUE & CORDOVA STREET RECONSTRUCTION SCHED A

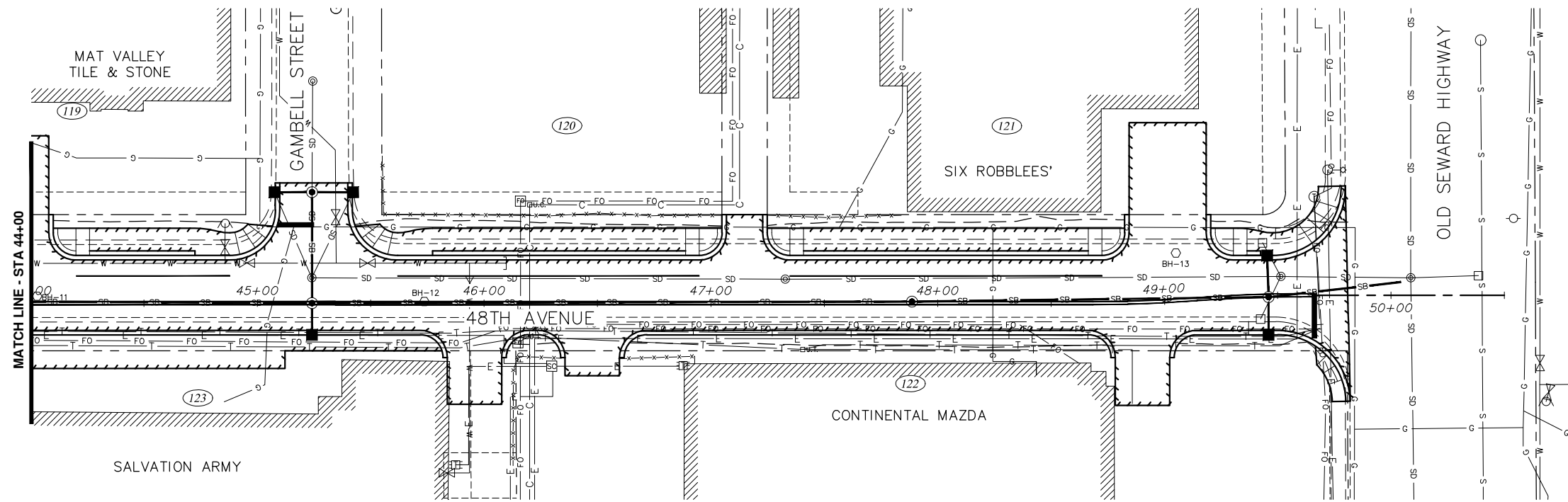
ROADWAY PLAN AND PROFILE

48TH AVENUE
 STA 36+00 TO STA 44+00

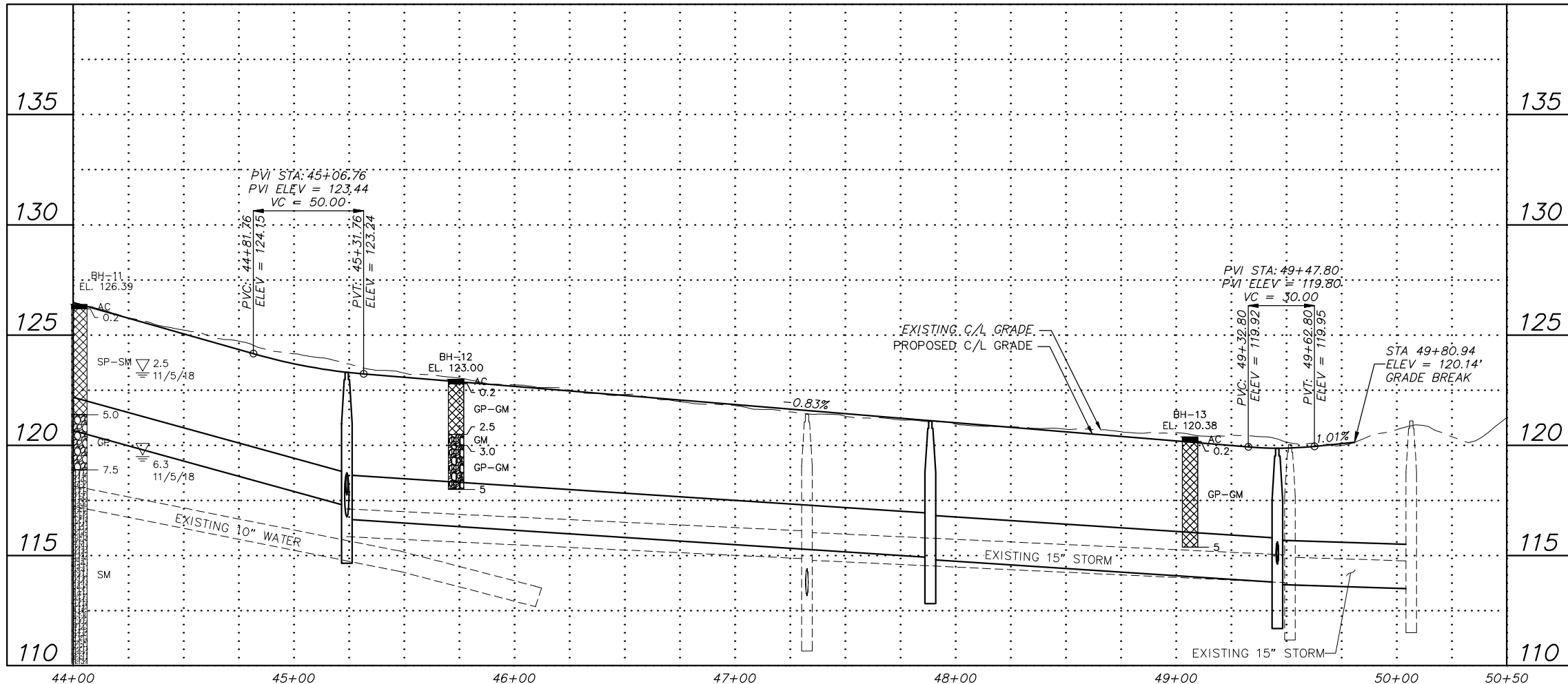
SCALE: HOR. 1"=30'
 VER. 1"=3'

GRID SW831
 DATE DEC 2019 STATUS DSR

B3.4 of **B3.5**



ALTERNATIVE #3
PREFERRED ALTERNATIVE



File: J:\JobData\10143_00_48th Ave And Cordova St Reconstruction\00_CADD\01_Civil\10143_00_Plan And Profile - Roadway_Alt_3.dwg

RECORD DRAWING
 1. DATA PROVIDED BY: _____ TITLE: _____
 THIS WILL SERVE TO CERTIFY THAT THESE RECORD DRAWINGS ARE A TRUE AND ACCURATE REPRESENTATION OF THE PROJECT AS CONSTRUCTED.
 CONTRACTOR: _____ DATE: _____
 BY: _____
 2. DATA TRANSFERRED BY: _____ TITLE: _____
 COMPANY: _____ DATE: _____
 3. BASED ON PERIODIC FIELD OBSERVATIONS BY THE ENGINEER (OR AN INDIVIDUAL UNDER HIS/HER DIRECT SUPERVISION), THE CONTRACTOR-PROVIDED DATA APPEARS TO REPRESENT THE PROJECT AS CONSTRUCTED.
 DATA TRANSFER CHECKED BY: _____ TITLE: _____
 COMPANY: _____ DATE: _____
 BY: _____

DATA	DRAWN BY	CHECKED BY
BASE		
TOPOGRAPHY		
PROFILE		
STORM SEWER		
WATER/SANITARY SEWER		
GAS		
TELEPHONE		
ELECTRIC		
DESIGN		
QUANTITIES		
PRELIMINARY/FINAL		
MUNICIPAL/STATE		

FIELD BOOKS	BM NO.	LOCATION	ELEV.	REV	DATE	DESCRIPTION	BY

GRAPHIC SCALE: 60 30 0 30 60

CRW ENGINEERING GROUP, LLC
 3940 ARCTIC BLVD, SUITE 300
 ANCHORAGE, ALASKA 99503
 PHONE: (907) 562-3252
 #AECLE882-AR



PROJECT MANAGEMENT AND ENGINEERING DEPARTMENT

06-26 48TH AVENUE & CORDOVA STREET RECONSTRUCTION SCHED A

ROADWAY PLAN AND PROFILE

48TH AVENUE
STA 44+00 TO EOP

SCALE: HOR. 1"=30'
VER. 1"=3'

GRID SW#31
DATE DEC 2019 STATUS DSR

B3.5 of **B3.5**